

GRAVELLY®

**8000 SERIES
GROUNDS
MAINTENANCE
TRACTORS
PARTS CATALOG**

Form: 31185 (8/79)
Printed in U.S.A.

TO CONTINUE ITS PROGRAM OF QUALITY AND DESIGN IMPROVEMENT, THE MANUFACTURER
RESERVES THE RIGHT TO CHANGE SPECIFICATIONS, DESIGNS AND PRICES WITHOUT NOTICE
AND WITHOUT INCURRING OBLIGATION



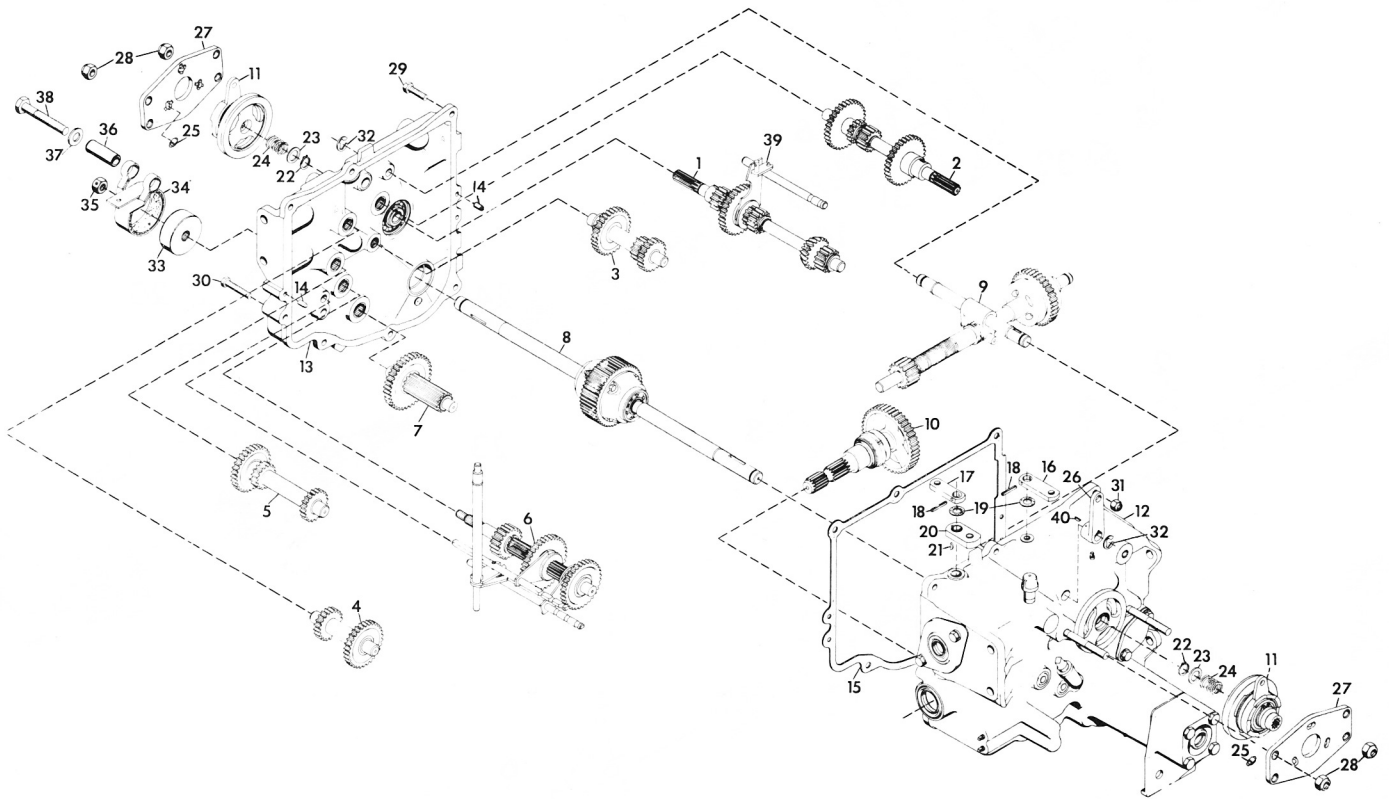
1 Gravelly Lane
Clemmons, N. C. 27012

TABLE OF CONTENTS

Model 8179

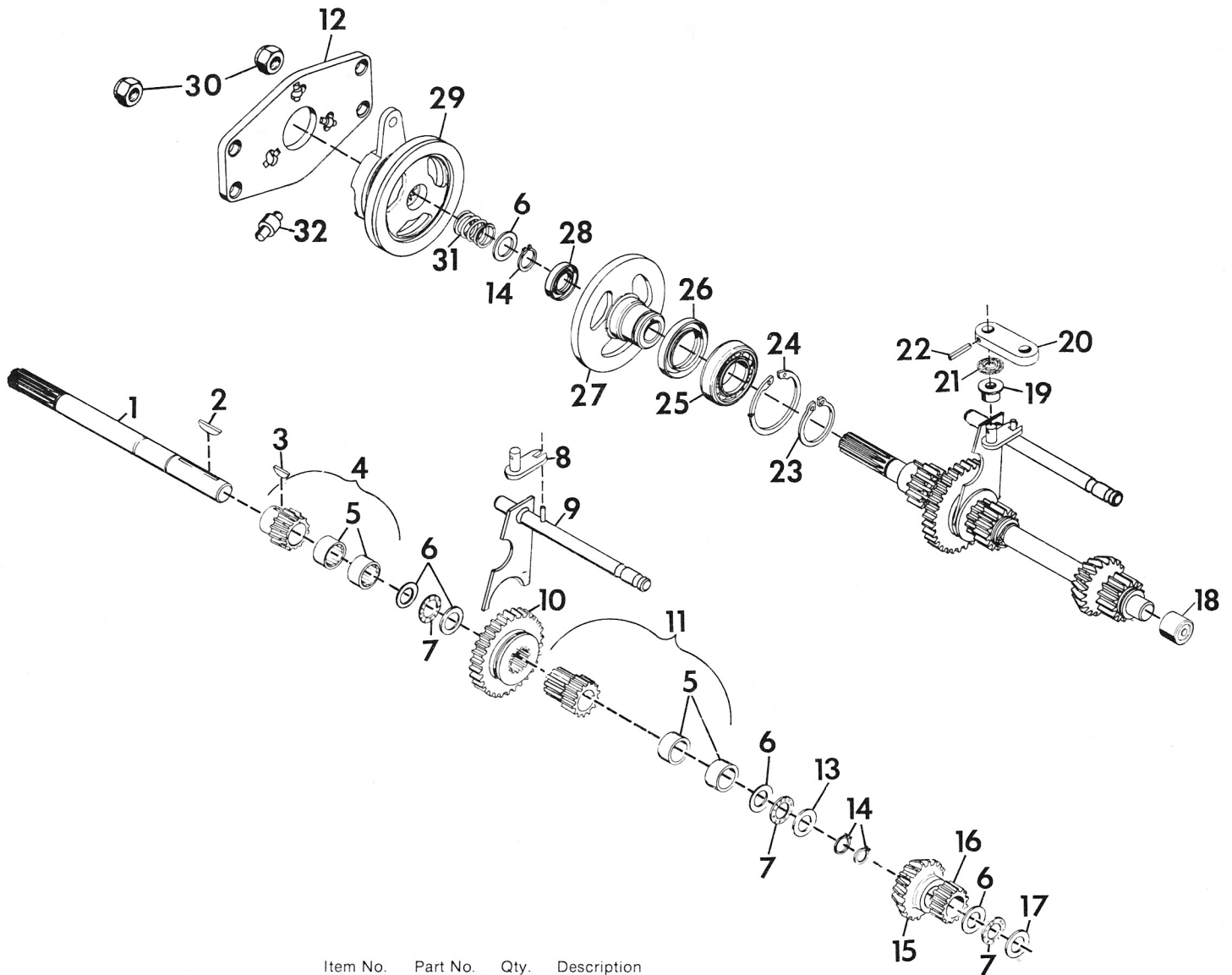
	Page
Transmission	1
Number One Shaft and Forward Clutch	2
Number Two Shaft and Reverse Clutch	3
Number Four Shaft and Idler Gears	4
Number Five Shaft, First Gear and Second Gear	4
Number Six Shaft, Brake Band and Sliding Gears	5
Number Seven Shaft, Pinion Shaft and Final Drive Gear	6
Number Eight Shaft and Differential	6
Number Nine Shaft and PTO Clutch	7
Number Ten Shaft and PTO Drive Gear	8
Number Eleven - Forward and Reverse Clutch	8
Number Twelve - Transmission Case	9
Number Thirteen - Transmission Cover	10
Manual Lift	11
Hydraulic System	12
Steering - Commercial Tractor	14
Steering - Consumer Tractor	15
Transmission Controls and Brake Lever Controls	16
Tractor Frame	18
Rear Hitch for Models 8102, 8122, 8123, 8129, 8162-B, 8163-B and 8169	20
Rear Hitch for Models 8162-T, 8183-T, 8163-T, <u>8179</u> and 8199	20
Engine, Fuel System and Exhaust System for Models 8102, 8122, 8128 and 8129	21
Engine, Fuel System and Exhaust System for Models 8162-T, 8163-T, and 8183-T	22
Engine, Fuel System and Exhaust System for Models 8162-B, 8163-B and 8169	23
Engine, Fuel System and Exhaust System for Model 8199	24
Engine, Fuel System and Exhaust System <u>for Model 8179</u>	25
Electric System for Models 8122 and 8123	26
Electric System for Model 8102	27
Electric System for Model 8128 and 8129	28
Electric System for Models 8162-T, 8163-T and 8183-T	29
Electric System for Model 8169	30
Electric System for Model 8199	31
Electric System for <u>Model 8179</u>	32
Electric System for Models 8162-B and 8163-B	33
Front and Rear Wheel	34
Wiring Diagram for 8102	35
Wiring Diagram for 8122 and 8123	35
Wiring Diagram for 8162-B, 8163-B, 8128 and 8129	36
Wiring Diagram for 8162-T, 8163-T and 8183-T	36
Wiring Diagram for 8128-B, 8129, 8162-B and 8163-B	37
Wiring Diagram for 8199	37
Wiring Diagram for 8169	38
Wiring Diagram for <u>8179</u>	38

TRANSMISSION



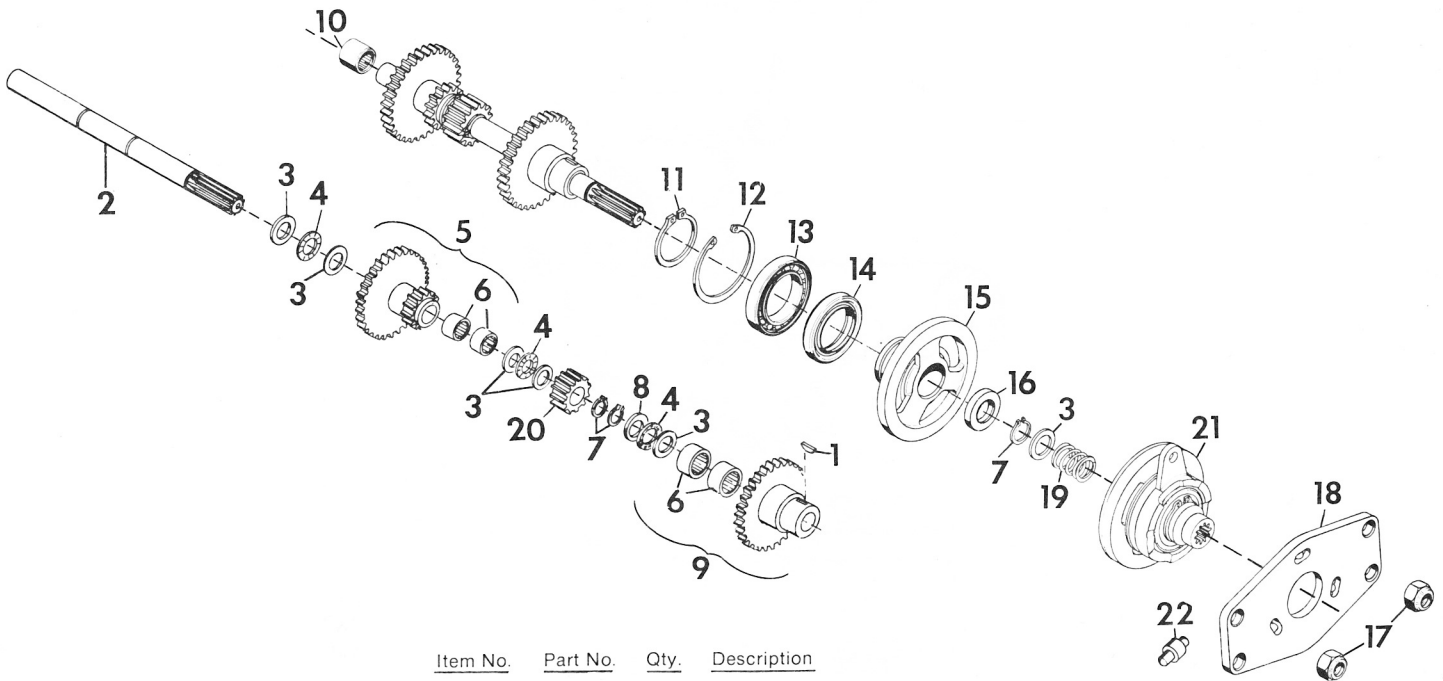
Item No.	Part No.	Qty.	Description
1	Refer To:		Number 1 Shaft, Forward Clutch
2	Refer To:		Number 2 Shaft, Reverse Clutch
3	Refer To:		Number 3 Shaft, 3rd and 4th Gear
4	Refer To:		Number 4 Shaft, Idler
5	Refer To:		Number 5 Shaft, 1st and 2nd Gear
6	Refer To:		Number 6 Shaft, Brake and Sliding Gear
7	Refer To:		Number 7 Shaft, Pinion and Final Drive
8	Refer To:		Number 8 Shaft, Differential Assembly
9	Refer To:		Number 9 Shaft, PTO Clutch Assembly
10	Refer To:		Number 10 Shaft, PTO Drive Assembly
11	Refer To:		Number 11, Forward-Reverse Clutch Assembly
12	Refer To:		Number 12, Transmission Case Assembly
13	Refer To:		Number 13, Transmission Cover Assembly
14	18089	2	Pin, Dowel; .375 x .625
15	18027	1	Gasket, Transmission Cover
16	17929	1	Arm, Shifter
17	17945	1	Arm, Shifter
18	421202	2	Pin, Spring; 3/16 x 1
19	21141	2	Washer, Felt; (Special for Trans.)
20	17944	1	Arm, Shifter
21	271089	1	Key, Woodruff; .125 x .375 Hard
22	11135	2	Ring, Retaining; .750 Shaft
23	11223	2	Race, Bearing Thrust; .752 x 1.240 x .030
24	20444	2	Spring, Comp Type; 1.0 x .80 x 36 Lb/in
25	23370	6	Roller, Clutch
26	18019	1	Lever, PTO
27	18047	2	Plate, Clutch
28	190171	4	Nut, Lock; 1/2-20 Washer Insert
29	180126	6	Bolt, Hex; 3/8-16 x 1-1/2
30	180132	2	Bolt, Hex; 3/8-16 x 2-1/4
31	456004	6	Nut, Lock; 3/8-16 Washer Insert Hex
32	11270	2	E-Ring; .750 Shaft
33	21371	1	Drum, Brake
34	18162	1	Band, Brake Asm.
35	124589	1	Nut, Hex; 5/8-11
36	18165	1	Bushing; .530 x .750 x 2.06
37	120396	1	Washer, Flat; .500 x 1.062 x .095
38	180188	1	Bolt, Hex; 1/2-13 x 2-3/4
39	17926	1	Weldment, Shifter
40	124549	1	Key, Woodruff; .187 x .750 Hard

NUMBER ONE SHAFT AND FORWARD CLUTCH



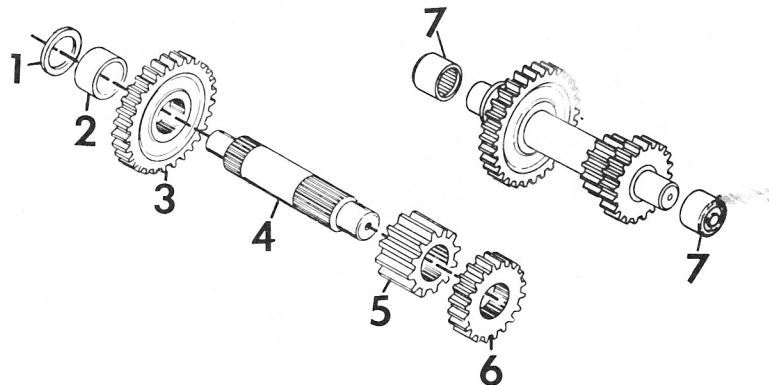
Item No.	Part No.	Qty.	Description
1	20447	1	Shaft, Splined Fwd Clutch
2	117989	1	Key, Woodruff; 3/16 x 1-1/4 Hard No. 19
3	431787	1	Key, Woodruff; .188 x .625 Hard
4	18025	1	Gear and Bearing Asm.
5	17949	4	Bearing Needle; 3/4 x 1 x 1/2
6	11223	5	Race, Bearing Thrust; .752 x 1.240 x .030
7	6741	3	Bearing, Needle Thrust; .752 x 1.240 x .078
8	17926	1	Weldment, Shifter
9	20755	1	Weldment, Shift Rail
10	18011	1	Gear, Spur; 2-Speed
11	18007	1	Gear and Bearing Asm.
12	18047	1	Plate, Clutch
13	6742	1	Race, Bearing Thrust; .060
14	11135	3	Ring, Retaining; .750 Shaft
15	18006	1	Gear, Bevel
16	18003	1	Gear, 10 DP 16 Teeth x .750 Standard
17	14998	1	Race, Bearing Thrust; .752 x 1.240 x .095
18	17913	1	Bearing, Needle; 3/4 x 1 x 3/4
19	17925	1	Bushing, 2-Speed
20	17929	1	Arm, Shifter
21	21141	1	Washer, Felt; (Special for Trans.)
22	421202	1	Pin, Spring; 3/16 x 1
23	17919	1	Ring, Retaining; 1.969 Shaft
24	18872	1	Ring, Retaining; 3.156 Bore
25	17915	1	Bearing, Ball; 1.968 x 3.149 x .629
26	17917	1	Seal, Oil; 2.250 x 3.005 x .375
27	18024	1	Hub, Clutch
28	18035	2	Seal, Oil; 3/4 x 1-5/8 x 1/4
29		1	Number 11, Forward-Reverse Clutch Assembly
30	190171	2	Nut, Lock; 1/2-20 Washer Insert
31	20444	1	Spring, Comp Type; 1.0 x .80 x 36 Lb/in
32	23370	3	Roller, Clutch

NUMBER TWO SHAFT AND REVERSE CLUTCH



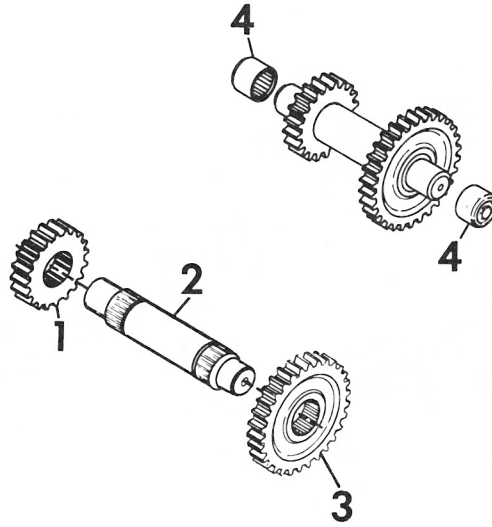
Item No.	Part No.	Qty.	Description
1	431787	1	Key, Woodruff; .188 x .625 Hard
2	20448	1	Shaft, Splined Rev Clutch
3	11223	6	Race, Bearing Thrust; .752 x 1.240 x .030
4	6741	3	Bearing, Needle Thrust; .752 x 1.240 x .078
5	18020	1	Gear, Idler Asm.
6	17949	4	Bearing, Needle; 3/4 x 1 x 1/2
7	11135	3	Ring, Retaining; .750 Shaft
8	6742	1	Race, Bearing Thrust; .060
9	17947	1	Assembly, Reverse Gear and Bearing
10	17913	1	Bearing, Needle; 3/4 x 1 x 3/4
11	17919	1	Ring, Retaining; 1.969 Shaft
12	18872	1	Ring, Retaining; 3.156 Bore
13	17915	1	Bearing, Ball; 1.968 x 3.149 x .629
14	17917	1	Seal, Oil; 2.250 x 3.005 x .375
15	18024	1	Hub, Clutch
16	18035	1	Seal, Oil; 3/4 x 1-5/8 x 1/4
17	190171	2	Nut, Lock; 1/2-20 Washer Insert
18	18047	1	Plate, Clutch
19	20444	1	Spring, Comp Type; 1.0 x .80 x 36 Lb/in
20	18003	1	Gear, 10 DP 16 Teeth x .750 Standard
21		1	Number 11, Forward-Reverse Clutch Assembly
22	23370	3	Roller, Clutch

NUMBER THREE SHAFT, THIRD GEAR AND FOURTH GEAR



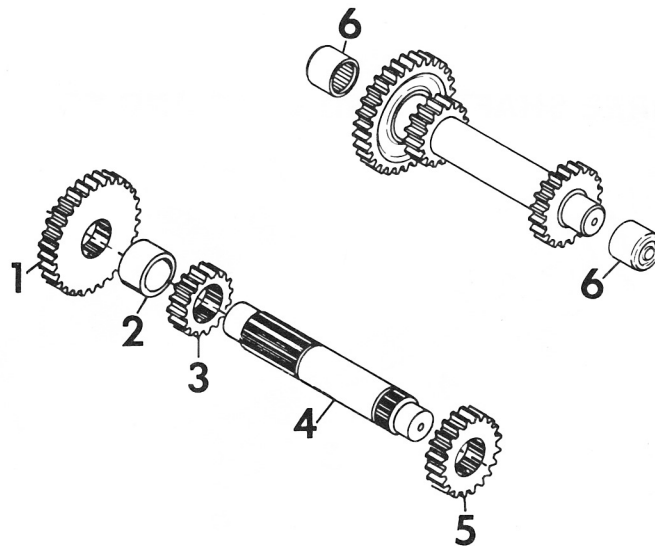
Item No.	Part No.	Qty.	Description
1	18000	1	Bearing, Thrust Race Torr Trc-1018
2	17999	1	Spacer, 1.027 x 1.125 x .457
3	19535	1	Gear
4	17997	1	Shaft, Splined
5	17992	1	Gear, 10 DP 16 Teeth x .750
6	15118	1	Gear, 10 DP 20 Teeth x .600
7	17914	2	Bearing, Needle; 5/8 x 13/16 x 3/4

NUMBER FOUR SHAFT AND IDLER GEARS



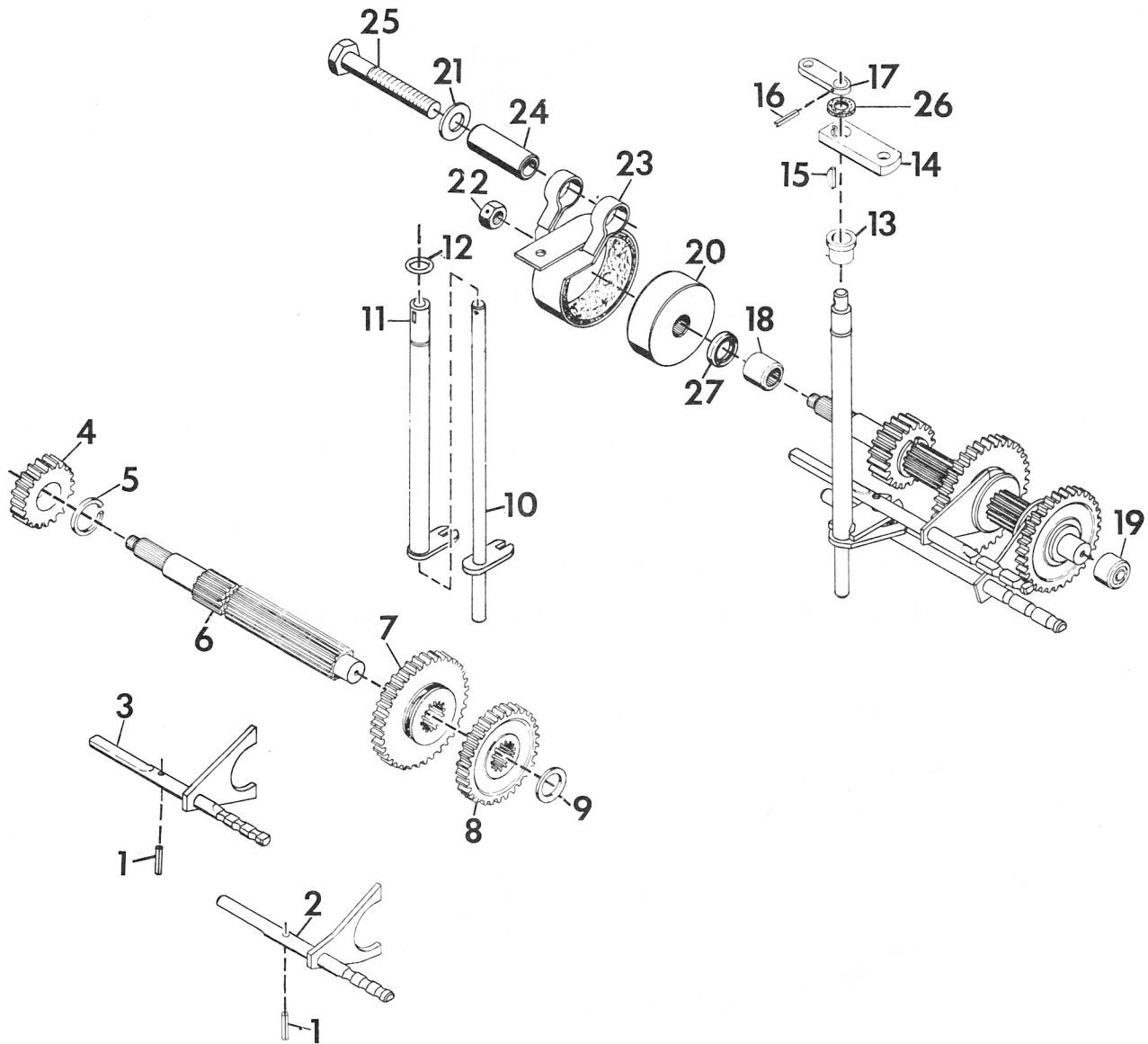
Item No.	Part No.	Qty.	Description
1	15118	1	Gear, 10 DP 20 Teeth x .600
2	17995	1	Shaft, Splined
3	15115	1	Gear, 10 DP 30 Teeth x .500
4	17913	2	Bearing, Needle; 3/4 x 1 x 3/4

NUMBER FIVE SHAFT, FIRST GEAR AND SECOND GEAR



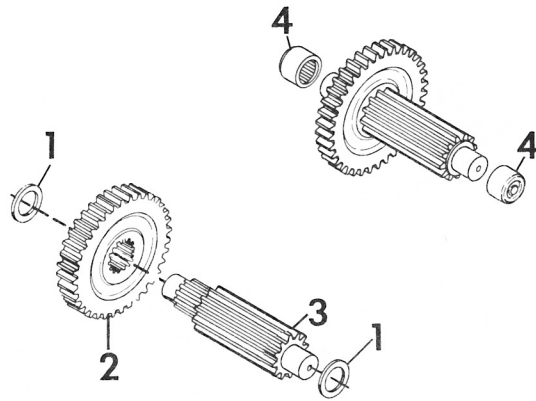
Item No.	Part No.	Qty.	Description
1	15115	1	Gear, 10 DP 30 Teeth x .500
2	17993	1	Spacer, 1.057 x 1.250 x .550
3	17992	1	Gear, 10 DP 16 Teeth x .750
4	17989	1	Shaft, Splined
5	15118	1	Gear, 10 DP 20 Teeth x .600
6	17913	2	Bearing, Needle; 3/4 x 1 x 3/4

NUMBER SIX SHAFT, BRAKE BAND AND SLIDING GEARS



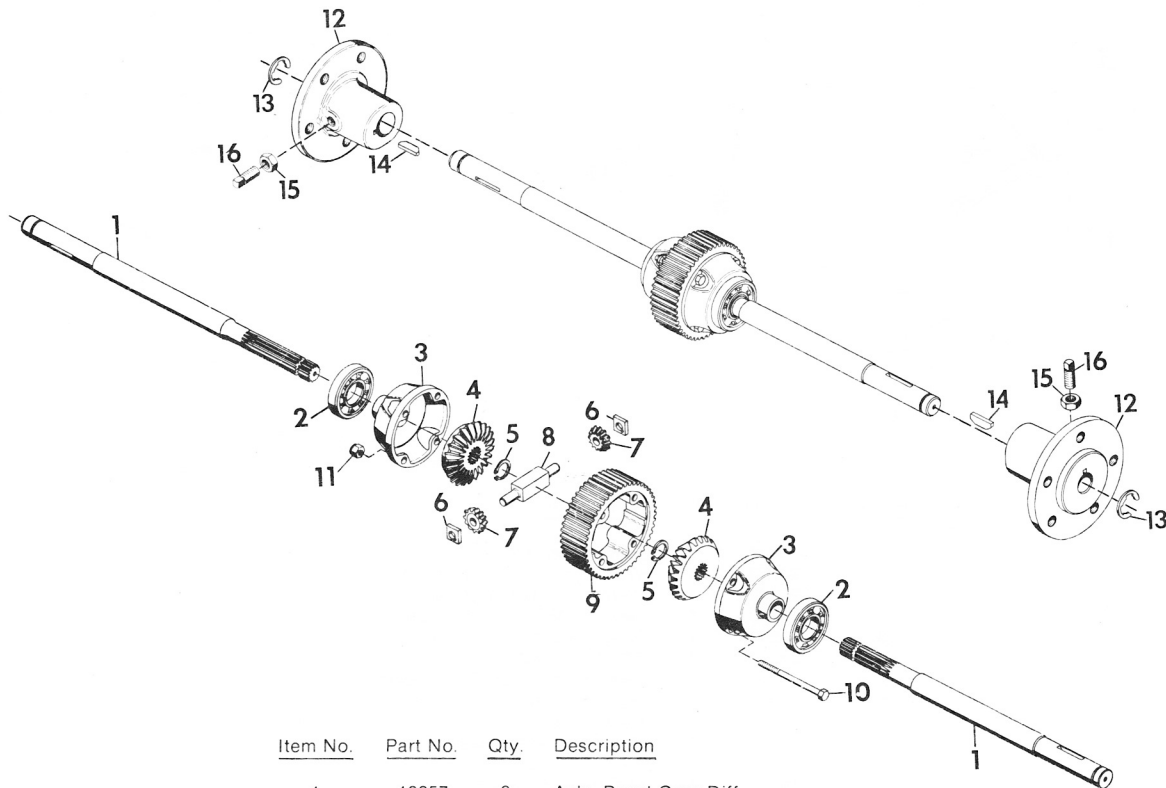
Item No.	Part No.	Qty.	Description
1	456390	2	Pin, Spring; 1/4 x 3/4
2	20762	1	Weldment, Rail Shift Fork 2 & 4 Range
3	20761	1	Weldment, Rail Shift Fork 1 & 3 Range
4	14988	1	Gear, 8 DP 16 Teeth x .850
5	14987	1	Ring, Retaining; 1.00 Shaft
6	21370	1	Shaft, Slide Gear
7	14989	1	Gear, Sliding; 10 DP, 30 Teeth x .594
8	14995	1	Gear, Sliding; 10 DP, 36 Teeth x .594
9	14998	1	Race, Bearing Thrust; .752 x 1.240 x .095
10	17937	1	Weldment, 2nd and 4th Shifter
11	17940	1	Weldment, 1st and 3rd Shifter
12	18018	1	O-Ring; 5/8 x 3/4 x 1/16
13	17943	1	Bushing; .756 x 1.125 x .75
14	17944	1	Arm, Shifter
15	271089	1	Key, Woodruff; .125 x .375 Hard
16	421202	1	Pin, Spring; 3/16 x 1
17	17945	1	Arm, Shifter
18	11063	1	Bearing, Needle; 3/4 x 1 x 3/4
19	17913	1	Bearing, Needle; 3/4 x 1 x 3/4
20	21371	1	Drum, Brake
21	120396	1	Washer, Flat; .500 x 1.062 x .095
22	124589	1	Nut, Hex; 5/8-11
23	18162	1	Band, Brake Asm.
24	18165	1	Bushing; .530 x .750 x 2.06
25	180188	1	Bolt, Hex; 1/2-13 x 2-3/4
26	21141	1	Washer, Felt; (Special for Trans.)
27	15137	1	Seal, Oil; .750 x 1.254 x .188

NUMBER SEVEN SHAFT, PINION SHAFT AND FINAL DRIVE GEAR



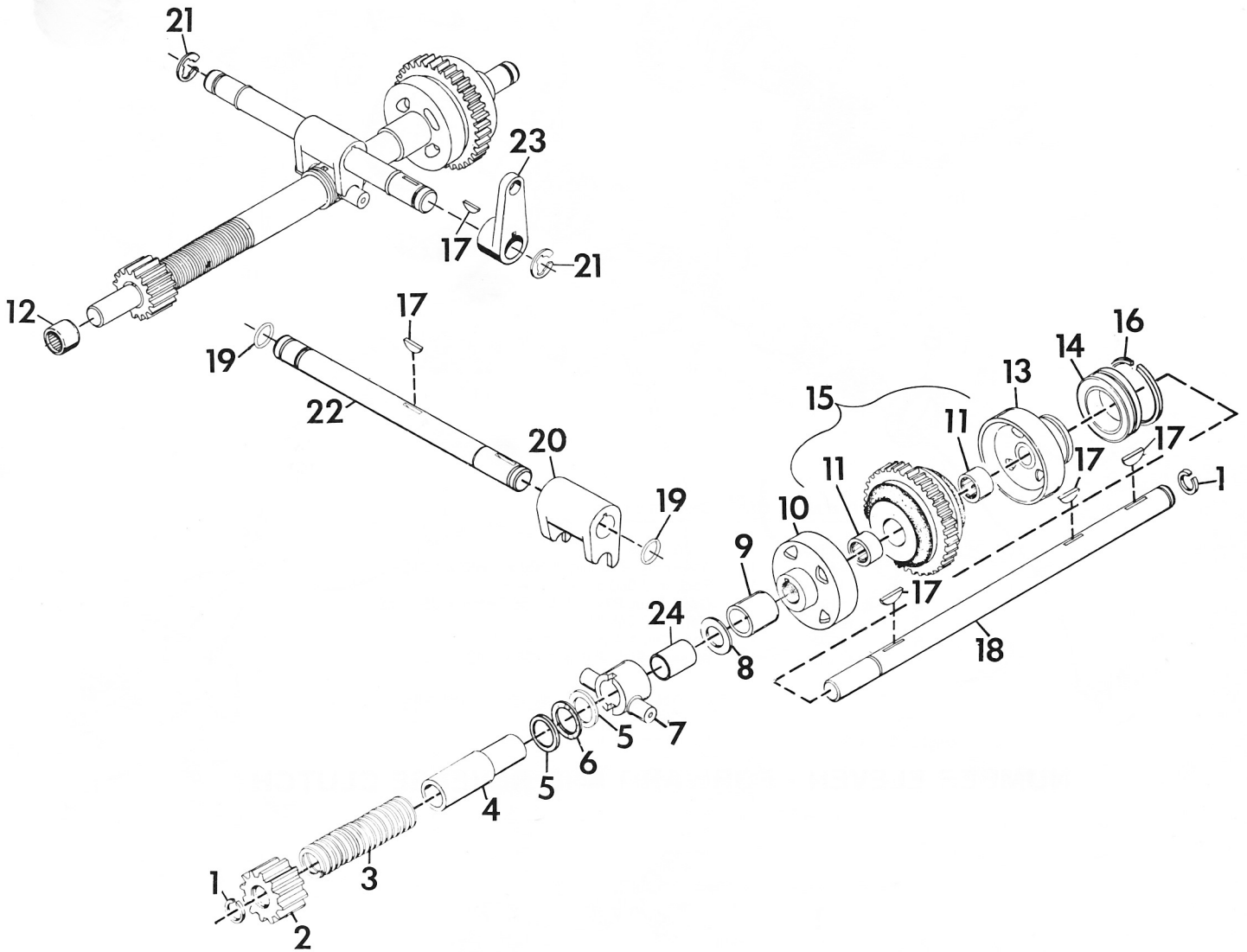
Item No.	Part No.	Qty.	Description
1	19340	2	Race, Bearing Thrust; 1.002 x 1.552 x .030
2	17987	1	Gear, 8 DP 30 Teeth x .750
3	17986	1	Pinion, Final Drive
4	17912	2	Bearing, Needle; 1.000 x 1.250 x .750

NUMBER EIGHT SHAFT AND DIFFERENTIAL



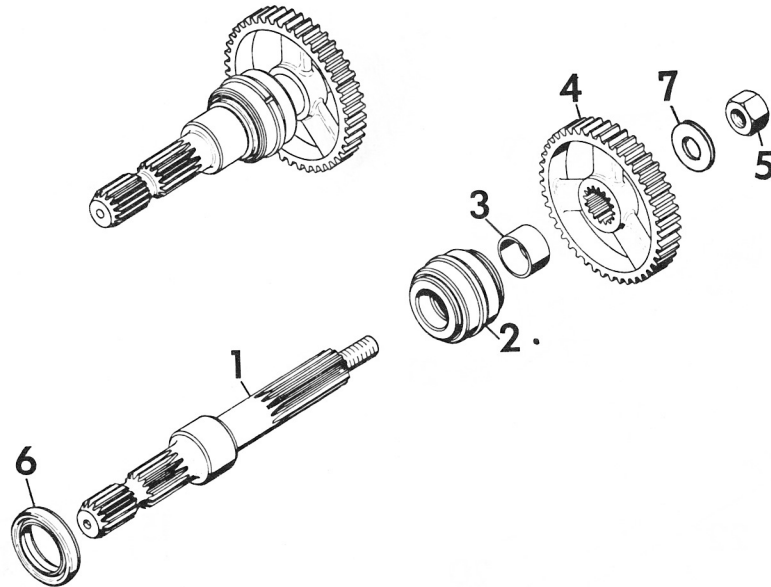
Item No.	Part No.	Qty.	Description
1	19957	2	Axle, Bevel Gear Diff.
2	17984	2	Bearing, Ball; 1.378 x 2.834 x .669
3	19956	2	Cap, Diff. End
4	19953	2	Gear, Bevel
5	17980	2	Ring, Retaining; 1.000 Shaft
6	12667	2	Block, Drive
7	19952	2	Pinion, Bevel
8	19954	1	Pin, Spider Pinion
9	19955	1	Gear, Final Drive
10	20513	4	Bolt, Hex; 5/16-18 x 2.5 Grade-8
11	20514	4	Nut, Hex; 5/16-18 Grade-8
12	18052	2	Hub, Wheel
13	18055		E-Ring; 1.125 Shaft
14	187184	2	Key, Woodruff; .250 x 2.125 Soft
15	124829	2	Nut, Jam; 3/8-16 Hex
16	102897	2	Screw, Set; 3/8-16 x 1-1/4 SQ HD Cup Point

NUMBER NINE SHAFT AND PTO CLUTCH



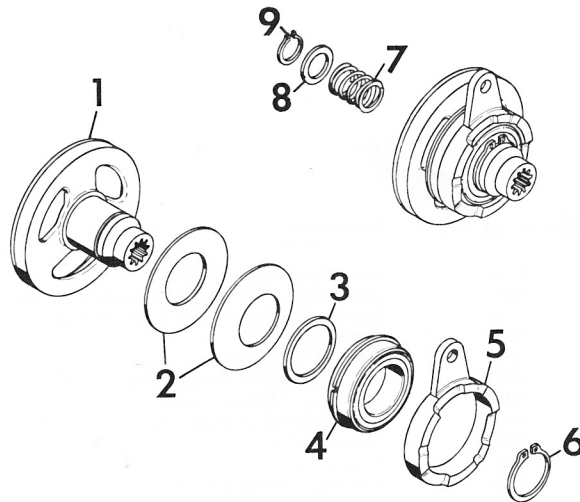
Item No.	Part No.	Qty.	Description
1	15733	2	Ring, Retaining; .750 Shaft
2	17965	1	Gear, Spur PTO; 10 DP 22 Teeth x 1.200 Std.
3	17964	1	Spring, Comp Type; 5 x 1.50 x 200 Rate
4	17963	1	Throw-Out, PTO
5	17959	2	Bearing, Thrust Race
6	11225	1	Bearing, Needle Thrust; 1.002 x 1.552
7	17960	1	Assembly, Shifting Collar
8	14998	1	Race, Bearing, Thrust; .752 x 1.240 x .095 Torr Trc-1220
9	17958	1	Spacer, PTO
10	17957	1	Cup, Clutch
11	17949	2	Bearing, Needle; 3/4 x 1 x 1/2
12	9960	1	Bearing, Torrington B-128 (B-128-OH)
13	17952	1	Cup, Clutch
14	17967	1	Bearing, Ball; 1.378 x 2.440 x .551
15	17953	1	Cone, Clutch Brg. Assy.
16	17966	1	Ring, Retaining; 1-3/8 Eaton 340-1
17	124549	5	Key, Woodruff; .187 x .750 Hard
18	17951	1	Shaft, PTO Clutch
19	18018	2	O-Ring; 5/8 x 3/4 x 1/16
20	18016	1	Yoke, PTO
21	11270	2	E-Ring; .750 Shaft
22	18017	1	Shaft, PTO Yoke
23	18019	1	Lever, PTO
24	17962	1	Bushing

NUMBER TEN SHAFT AND PTO DRIVE GEAR



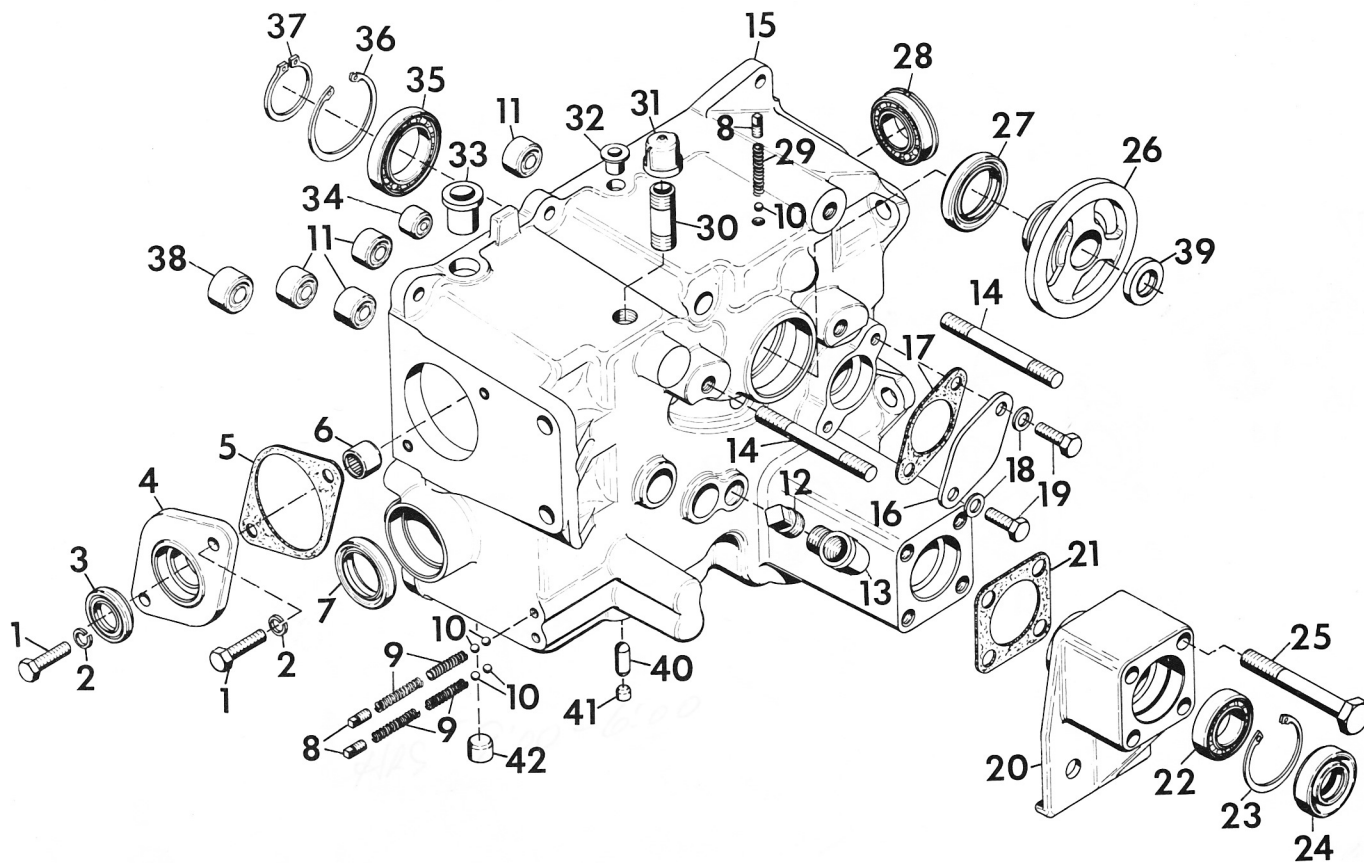
Item No.	Part No.	Qty.	Description
1	19538	1	Shaft, PTO
2	14640	1	Assembly, Bearing; 1.000 x 1.980 x 1.243
3	17924	1	Spacer; 1.060 x 1.250 x .450
4	17922	1	Gear, Spur PTO; 10 DP 56 Teeth x .750 Std.
5	124589	1	Nut, Hex; 5/8-11
6	17923	1	Seal, Oil; 1.375 x 2.129 x .312
7	421879	1	Washer, Flat .656 x 1.250 x .100

NUMBER ELEVEN - FORWARD AND REVERSE CLUTCH



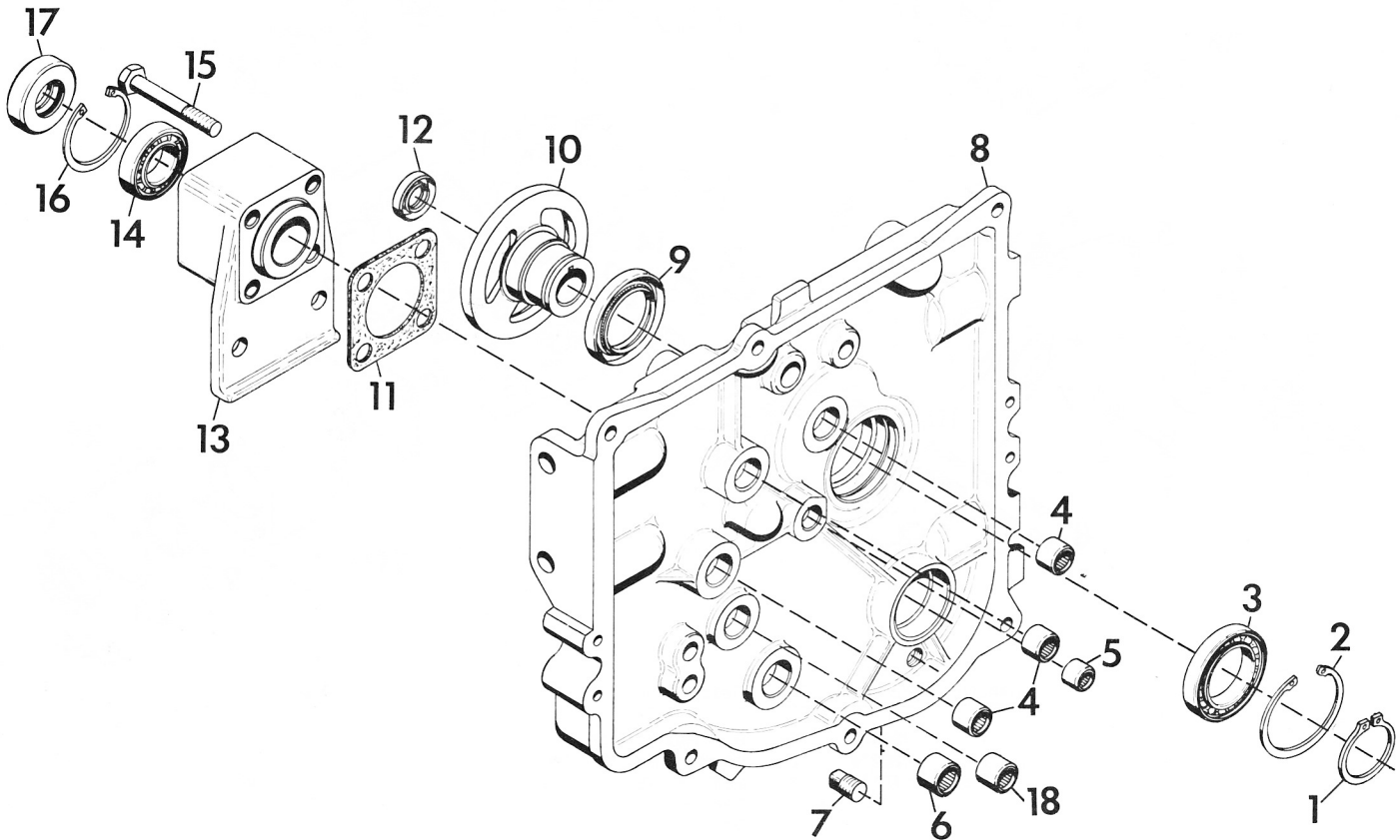
Item No.	Part No.	Qty.	Description
1	20449	1	Assembly, Clutch Disc
2	18041	2	Spring, Belleville
3	18548	1	Shim (.030) Fwd-Rev Clutch
4	18042	1	Bearing, Ball; 1.574 x 3.149 x .708
5	19063	1	Cam, Clutch
6	18043	1	Ring, Retaining; 1.562 Shaft
7	20444	1	Spring, Comp Type; 1.0 x .80 x 36 LB/IN
8	11223	1	Race, Bearing Thrust; .752 x 1.240 x .030
9	11135	1	Ring, Retaining; .750 Shaft

NUMBER TWELVE - TRANSMISSION CASE



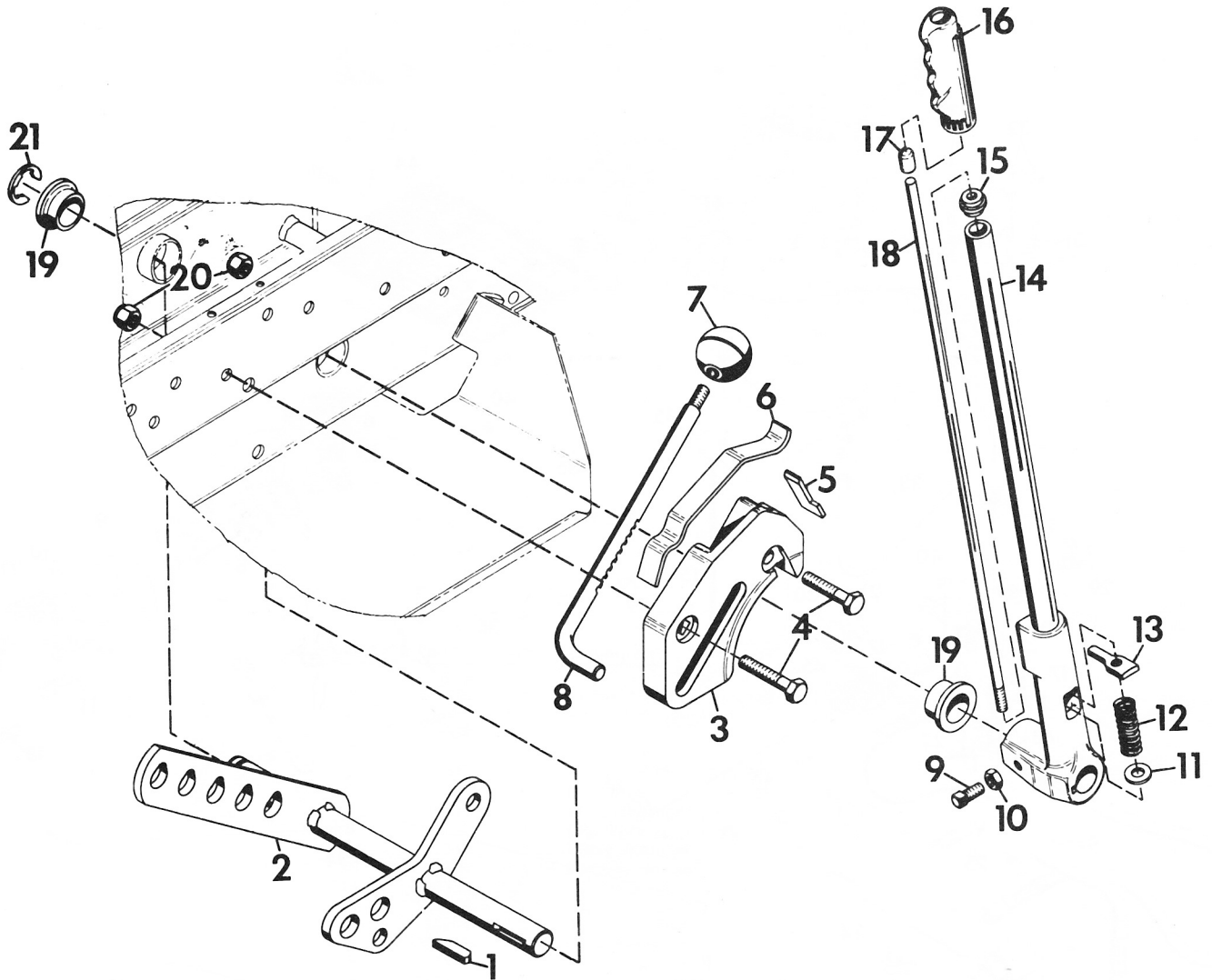
Item No.	Part No.	Qty.	Description
1	180079	2	Bolt, Hex; 5/16-18 x 1
2	120214	2	Washer, Lock; 5/16 SP
3	15137	1	Seal, Oil; .750 x 1.254 x .188
4	18859	1	Cap, Front PTO
5	18857	1	Gasket, Front Cap
6	9660	1	Bearing, Torrington B-128 (B-128-OH)
7	17923	1	Seal, Oil; 1.375 x 2.129 x .312
8	103877	3	Plug, Pipe; 1/8 In. SQ HD Steel
9	17936	4	Spring, Compression; 1.50 x .30 x 26 LB/IN
10	274301	5	Ball, Steel; 5/16
11	17913	4	Bearing, Needle; 3/4 x 1 x 3/4
12	103880	1	Plug, Pipe; 1/2 In. SQ HD Steel
13	108686	1	Elbow, 1/2 90 Degree Street
14	18036	2	Stud, Clutch
15	17910	1	Assembly, Transmission Case
16	18421	1	Plate, Cover
17	18422	1	Gasket, Cover Plate
18	120394	2	Washer, Flat; .406 x .812 x .065
19	180120	2	Bolt, Hex; 3/8-16 x .750
20	18810	1	Retainer, Axle Brg. L.H.
21	18030	1	Gasket
22	18029	1	Bearing, Ball; 1.250 x 2.250 x .500
23	18812	1	Ring, Retaining
24	18031	1	Seal, Oil Axle
25	180191	4	Bolt, Hex; 1/2-13 x 3-1/4 x .551
26	18024	1	Hub, Clutch
27	17917	1	Seal, Oil; 2.250 x 3.005 x .375
28	17967	1	Bearing, Ball; 1.378 x 2.440
29	24772	1	Spring
30	121664	1	Nipple, Pipe; 1/2 x 2-1/2
31	19472	1	Cap, Pipe; 1/2 NPT
32	17925	1	Bushing, 2-Speed
33	17943	1	Bushing; .756 x 1.125 x .75
34	17914	1	Bearing, Needle; 5/8 x 13/16 x 3/4
35	17915	1	Bearing, Ball; 1.968 x 3.149 x .629
36	18872	1	Ring, Retaining; 3.156 Bore
37	17919	1	Ring, Retaining; 1.969 Shaft
38	17912	1	Bearing, Needle; 1.000 x 1.250 x .750
39	18035	1	Seal, Oil; 3/4 x 1-5/8 x 1/4
40	18200	1	Pin, Interlock
41	421743	1	Plug, Cup; 3/8
42	17946	1	Plug

NUMBER THIRTEEN - TRANSMISSION COVER



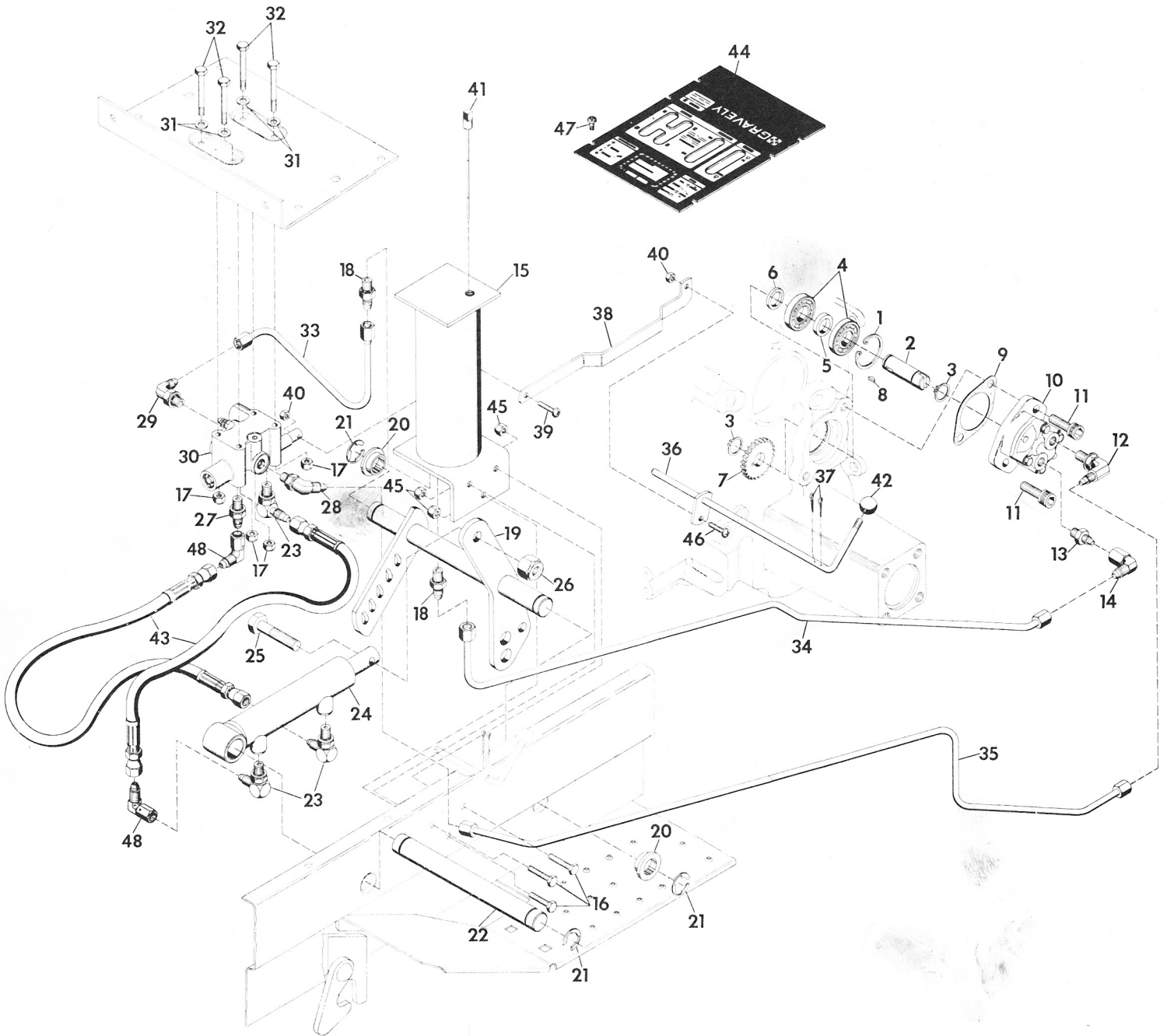
<u>Item No.</u>	<u>Part No.</u>	<u>Qty.</u>	<u>Description</u>
1	17919	1	Ring, Retaining; 1.969 Shaft
2	18872	1	Ring, Retaining; 3.156 Bore
3	17915	1	Bearing, Ball; 1.968 x 3.149 x .629
4	17913	3	Bearing, Needle; 3/4 x 1 x 3/4
5	17914	1	Bearing, Needle; 5/8 x 13/16 x 3/4
6	17912	1	Bearing, Needle; 1.000 x 1.250 x .750
7	103879	1	Plug, Pipe; 3/8 IN SQ HD Steel
8	18022	1	Trans. Cover Assy.
9	17917	1	Seal, Oil; 2.250 x 3.005 x .375
10	18024	1	Hub, Clutch
11	18030	1	Gasket
12	18035	1	Seal, Oil; 3/4 x 1-5/8 x 1/4
13	18810	1	Retainer, Axle Brg. L.H.
14	18029	1	Bearing, Ball; 1.250 x 2.250 x .500
15	180191	4	Bolt, Hex; 1/2-13 x 3-1/4
16	18812	1	Ring, Retaining
17	18031	1	Seal, Oil Axle
18	11063	1	Bearing, Needle; 3/4 x 1 x 3/4

MANUAL LIFT



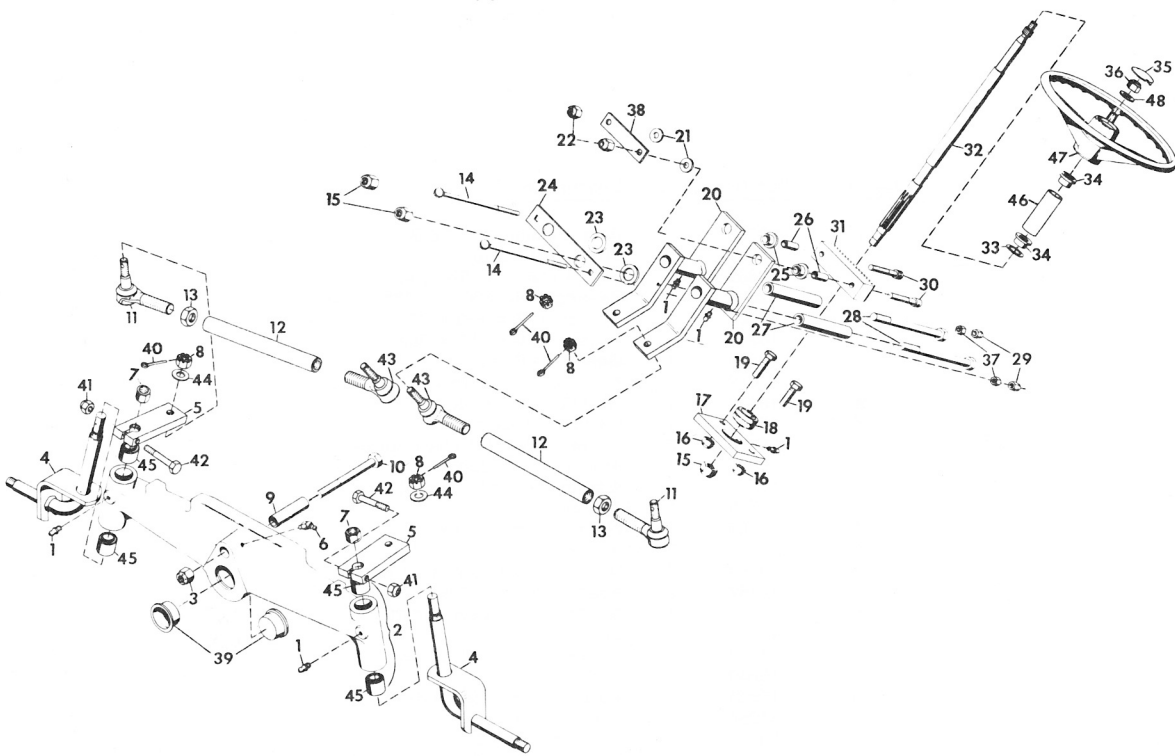
Item No.	Part No.	Qty.	Description
1	187184	1	Key, Woodruff; .250 x 2.125 Soft
2	18404	1	Shaft, Lift Lever Weldment
3	11103	1	Casting, Locator
4	180124	2	Bolt, Hex; 3/8-16 x 1-1/4
5	11106	1	Stop, Lever
6	11105	1	Spring, Stop
7	10670	1	Knob, Control
8	18732	1	Rod, Lever Stop
9	102897	1	Screw, Set; 3/8-16 x 1-1/4 SQ HD Cup Point
10	124829	1	Nut, Jam; 3/8-16 Hex
11	11670	1	Washer, Special Flat; .45 x .99 x .10
12	10682	1	Spring, Compression; 2 x .720 x 15.5 LB/IN
13	11116	1	Pawl, Lever
14	11113	1	Assembly, Lever Lift
15	11117	1	Guide, Push Rod
16	11119	1	Grip, Flex
17	19367	1	Tip, Push Rod
18	11118	1	Rod, Lever Push
19	18355	2	Bushing, Pivot
20	456004	2	Nut, Lock; 3/8-16 Washer Insert Hex
21	11112	1	E-Ring; 1.000 Shaft Copper

HYDRAULIC SYSTEM



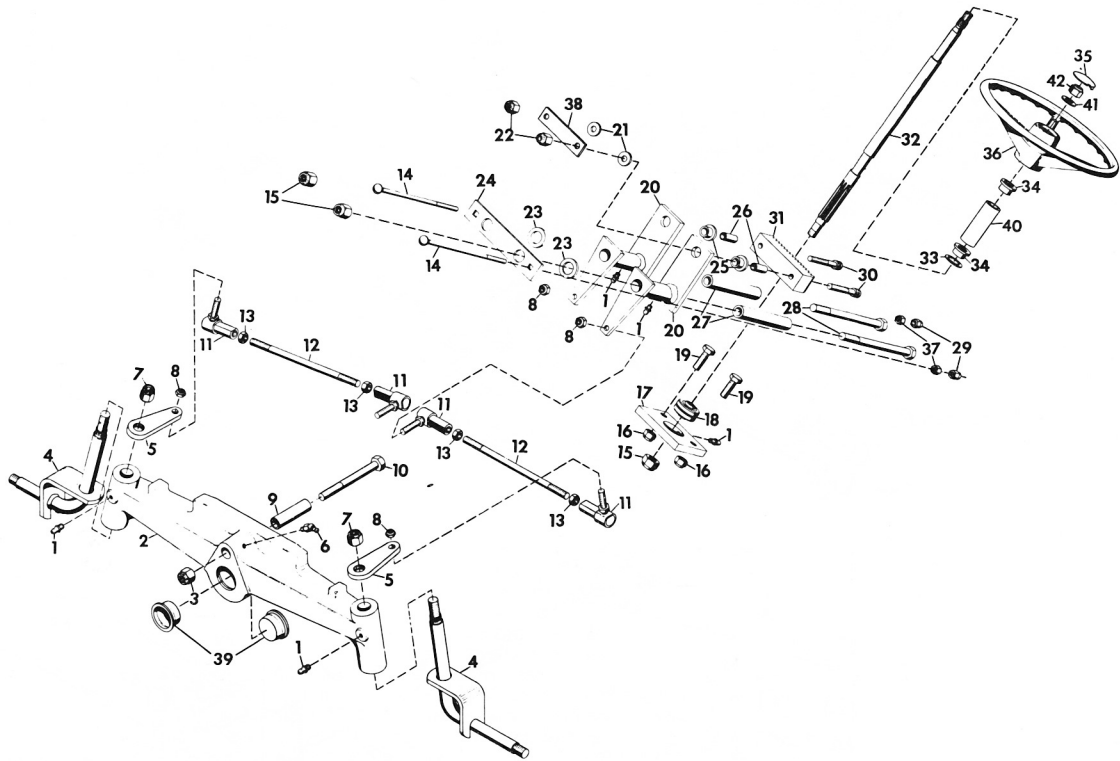
<u>Item No.</u>	<u>Part No.</u>	<u>Qty.</u>	<u>Description</u>
1	18799	1	Ring, Retaining; 1.378 Bore
2	18797	1	Shaft, Hyd Pump
3	18809	2	Ring, Retaining; .594 Shaft
4	12626	2	Bearing, Ball; .590 x 1.3780 x .433
5	18807	1	Spacer, .588 x .620 x .750
6	18798	1	Spacer, .620 x .750 x .364
7	18808	1	Gear, Hyd Pump
8	271089	1	Key, Woodruff; .125 x .375 Hard
9	18422	1	Gasket, Cover Plate
10	18813	1	Pump, Hydraulic
11	426370	2	Screw, Cap; 3/8-16 Hex Socket HD
12	18816	1	Adapter (P-H #2503-8-6)
13	18817	1	Adapter (P-H #0503-10-6)
14	18818	1	Adapter (P-H #3903-6-6)
15	22460	1	Weldment, Hyd Tank
16	180122	3	Bolt, Hex; 3/8-16 x 1
17	419454	4	Nut, Lock; 1/4-20 Washer Insert
18	19167	2	Adapter (P-H #050-6-6)
19	18822	1	Weldment, Lift Lever Shaft
20	18355	2	Bushing, Pivot
21	11112	2	E-Ring; 1.000 Shaft Cover
22	18830	1	Shaft, Hyd. Cyl.
23	18826	3	Adapter (P-H #2503-4-4)
24	31284	1	Cylinder, Hydraulic
25	180181	1	Bolt, Hex; 1/2-13 x 2
26	435507	1	Nut, Lock; 1/2-13 Washer Insert
27	21286	1	Adapter (P-H #0503-4-4)
28	18829	1	Adapter (P-H #3503-6-6)
29	18828	1	Adapter (P-H #2503-6-6)
30	18825	1	Valve, Hydraulic
31	120392	4	Washer, Flat; .281 x 6.25 x .065
32	180050	4	Bolt, Hex; 1/4-20 x 2-3/4
33	19165	1	Line, Return Valve to Tank
34	19166	1	Line, Hyd. (in) Tank to Pump
	31283	1	Line, Hyd. (in) Tank to Pump Com.
35	18843	1	Line, Hyd. (out) Valve to Pump
	31282	1	Line, Hyd. (out) Valve to Pump Com.
36	18833	1	Rod, Weldment Hyd Valve
37	121224	2	Pin, Cotter; .094 x 1.000
38	18836	1	Rod, Hyd. Control
	31303	1	Rod, Hyd. Control Com.
39	132848	1	Screw, Machine; 10-24 x 1 RD HD
40	190254	2	Nut, Lock; 10-24 Washer Insert
41	22457	1	Gauge, Hyd Tank Level
42	11261	1	Knob, Adj. Control
43	18845	2	Hose, Hyd 14.5 66
44	31165	1	Plate, Control Cover Hyd.
	31276	1	Plate, Control Cover Hyd. Com.
45	456004	3	Nut, Lock; 3/8-16 Washer Insert Hex
46	120910	1	Screw, Machine; 10-24 x 3/4 RD HD
47	167257	6	Screw, Tapping; 1/4-20 x 1/2 Pan HD C-Recess
48	21287	1	Adapter (P-H #3903-4-4)

STEERING - COMMERCIAL TRACTOR



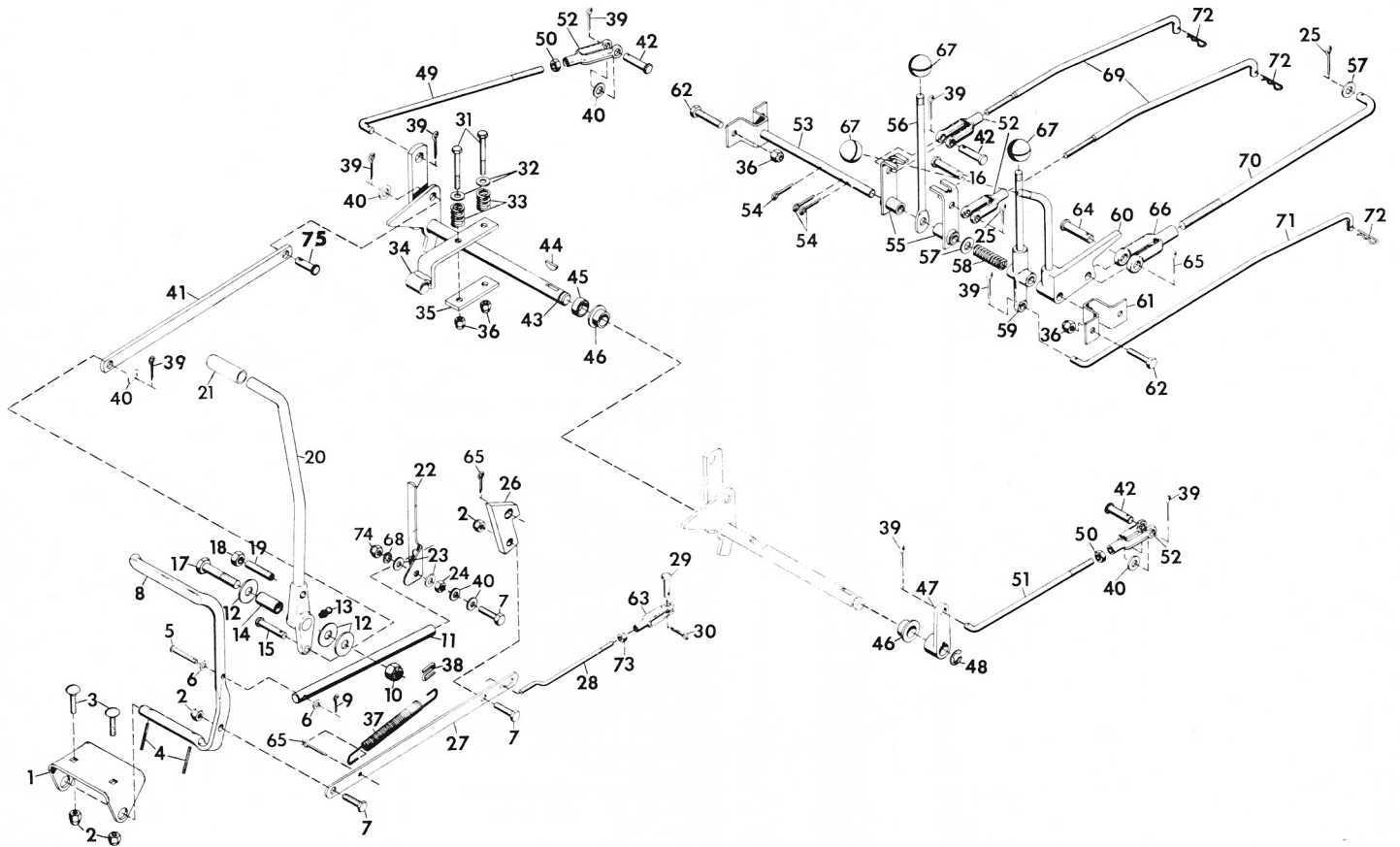
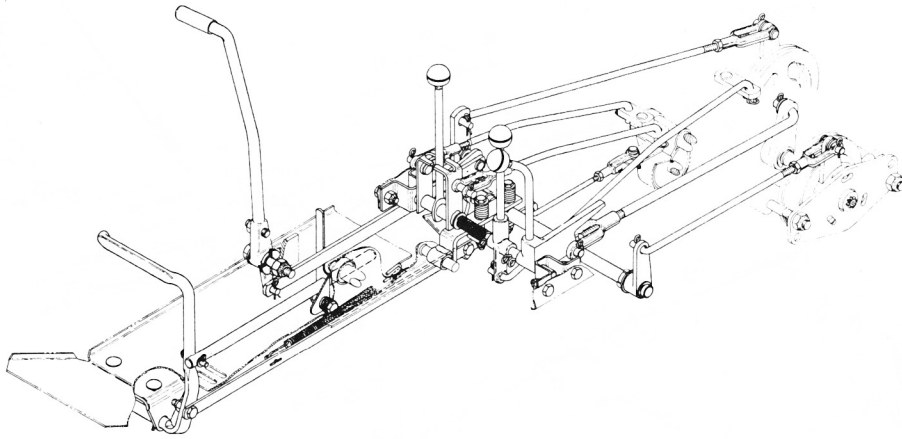
Item No.	Part No.	Qty.	Description
1	411027	5	Fitting, Lube; 1/4-28
2	23312	1	Assembly, Steering Axle
3	456007	1	Nut, Lock; 3/4-10 Washer Insert
4	18463	2	Weldment, King Pin
5	31270	2	Arm, Axle Tie Rod
6	411031	1	Fitting, Lube; 1/4-28 45 Deg. Elbow
7	124589	2	Nut, Hex; 5/8-11
8	125233	4	Nut, Hex Slotted; 3/8-24
9	23237	1	Tube, Axle Pivot
10	271781	1	Bolt, Hex; 3/4-10 x 4-1/2
11	21668	2	Assembly, Rod End; RH
12	23209	2	Tube, Tie Rod
13	124934	2	Nut, Jam; 1/2-20
14	126952	2	Bolt; 5/16-18 x 5-1/2 RD HD SQ NK
15	435507	3	Nut, Lock; 1/2-13 Washer Insert
16	419456	2	Nut, Lock; 7/16-14 Washer Insert Hex
17	21148	1	Block Bearing Support
18	21147	1	Bearing, Spherical
19	180149	2	Bolt, Hex; 7/16-14 x 1-1/2
20	31304	2	Weldment, Steering Arm
21	446470	2	Washer, Flat; .375 x 1.125 x .065
22	456004	2	Nut, Lock; 3/8-16 Washer Insert Hex
23	14998	2	Race, Bearing Thrust; .752 x 1.240 x .095
24	21079	1	Plate, Adjustment
25	21077	2	Bearing, Flange (P/M Bronze)
26	21076	2	Bushing; .391 x .622 x .670
27	21078	2	Sleeve, Pivot
28	443734	2	Bolt, Hex; 1/2-13 x 6
29	419455	2	Nut, Lock; 5/16-18 Washer Insert Hex
30	454473	2	Screw, Cap; 3/8-16 x 2 Hex Socket HD
31	21075	1	Gear, Rack
32	24442	1	Shaft, Steering Wheel
33	20273	1	Ring, Retaining; Int. Tooth 1.000 Shaft
34	10174	2	Bushing, Nylon; .760 x 1.000 x .600 Flange
35	23376	1	Insert, Steering Wheel Models 8128, 8129 & 8169
	31426	1	Insert, Steering Wheel Models 8179 & 8199
36	418692	1	Nut, Lock; 5/8-11 Washer Insert Hex
37	120376	2	Nut, Hex; 5/16-18
38	21246	1	Strap, Rack and Pinion
39	18785	2	Cap, Front Axle
40	121222	4	Pin, Cotter; .09 x .75
41	190139	2	Nut, Lock; 5/16-24 Washer Insert
42	181018	2	Bolt, Hex; 5/16-24 x 1-3/4
43	21669	2	Assembly, Rod End; L.H.
44	120388	2	Washer, Flat; .438 x 1.000 x .038
45	23241	4	Bushing; .877 x 1.004 x 1.0
46	24438	1	Bushing, Steering Wheel
47	24490	1	Wheel, Steering Models 8128, 8129 & 8169
	31281	1	Wheel, Steering Models 8179 & 8199
48	131016	1	Nut, Lock; 5/8-11 Washer Insert Hex

STEERING - CONSUMER TRACTOR



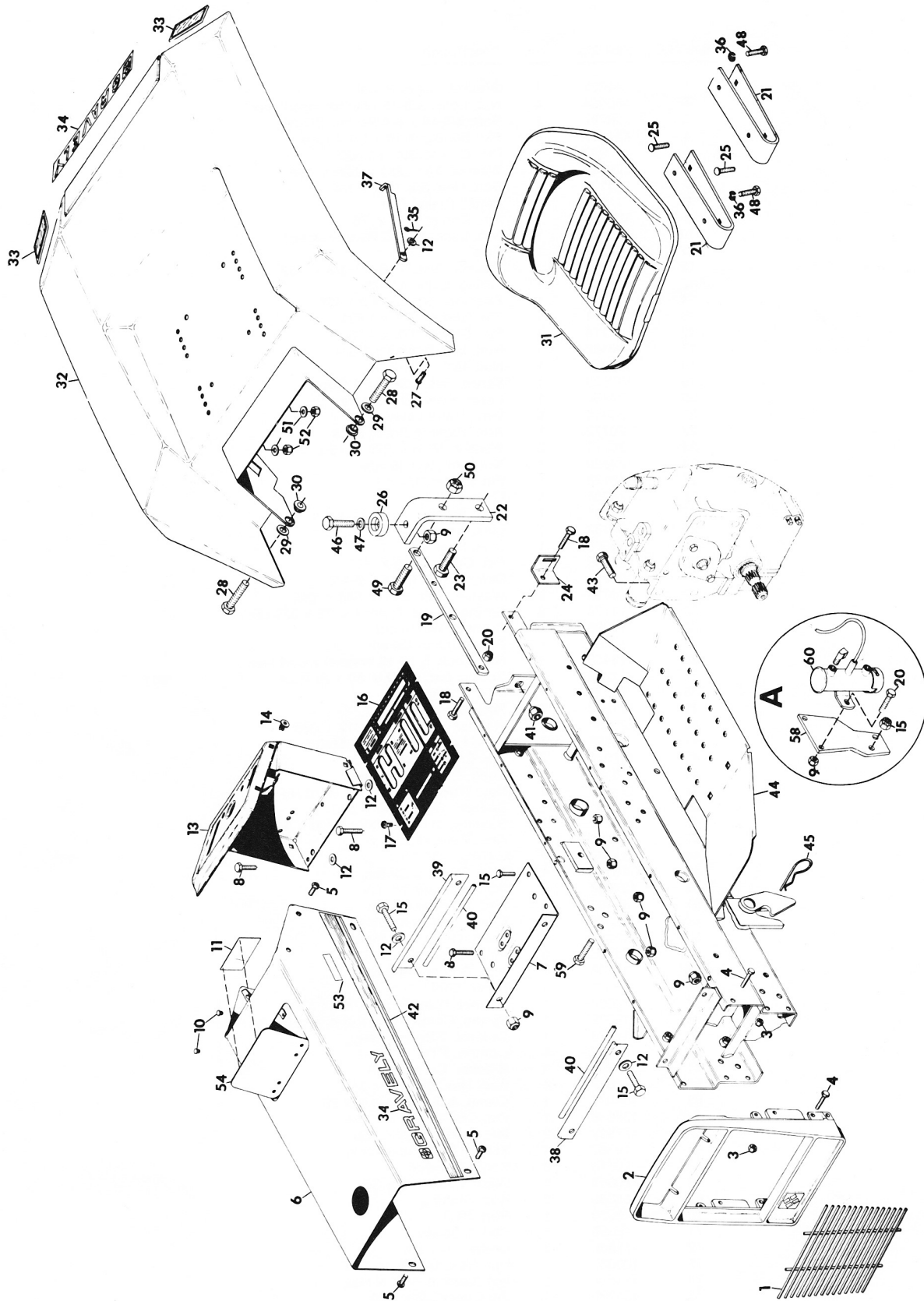
Item No.	Part No.	Qty.	Description
1	411027	5	Fitting, Lube; 1/4-28
2	23312	1	Assembly, Steering Axle
3	456007	1	Nut, Lock; 3/4-10 Washer Insert
4	18463	2	Weldment, King Pin
5	18461	2	Arm, Tie Rod
6	411031	1	Fitting, Lube; 1/4-28 45 Deg. Elbow
7	124589	2	Nut, Hex; 5/8-11
8	192481	4	Nut, Lock; 3/8-24 Washer Insert Hex
9	23237	1	Tube, Axle Pivot
10	271781	1	Bolt, Hex; 3/4-10 x 4-1/2
11	21084	4	Ball Joint, Steering
12	21085	2	Rod, Steering Tie
13	120369	4	Nut, Hex; 3/8-24
14	126952	2	Bolt, 5/16-18 x 5-1/2 RD HD SQ NK
15	435507	3	Nut, Lock; 1/2-13 Washer Insert
16	419456	2	Nut, Lock; 7/16-14 Washer Insert Hex
17	21148	1	Block Bearing Support
18	21147	1	Bearing, Spherical
19	180149	2	Bolt, Hex; 7/16-14 x 1-1/2
20	21071	2	Weldment, Steering Arm
21	446470	2	Washer, Flat; .375 x 1.125 x .065
22	456004	2	Nut, Lock; 3/8-16 Washer Insert Hex
23	14998	2	Race, Bearing Thrust; .752 x 1.240 x .095
24	21079	1	Plate, Adjustment
25	21077	2	Bearing, Flange (P/M Bronze)
26	21076	2	Bushing; .391 x .622 x .670
27	21078	2	Sleeve, Pivot
28	443734	2	Bolt, Hex; 1/2-13 x 6
29	419455	2	Nut, Lock; 5/16-18 Washer Insert Hex
30	454473	2	Screw, Cap; 3/8-16 x 2 Hex Socket HD
31	21075	1	Gear, Rack
32	24442	1	Shaft, Steering Wheel
33	20273	1	Ring, Retaining; Int. Tooth 1.000 Shaft
34	10174	2	Bushing, Nylon; .760 x 1.000 x .600 Flange
35	23376	1	Insert, Steering Wheel
36	24490	1	Wheel, Steering
37	120376	2	Nut, Hex; 5/16-18
38	21246	1	Strap, Rack and Pinion
39	18785	2	Cap, Front Axle
40	24438	1	Bushing, Steering Wheel
41	131016	1	Washer, Flat; .656 x 1.312 x .095
42	418692	1	Nut, Lock; 5/8-11 Washer Insert Hex

TRANSMISSION CONTROLS AND BRAKE LEVER CONTROLS



<u>Item No.</u>	<u>Part No.</u>	<u>Qty.</u>	<u>Description</u>
1	11021	1	Bracket, Brake Pedal
2	456004	4	Nut, Lock; 3/8-16 Washer Insert Hex
3	126227	2	Bolt; 3/8-16 x 3/4 RD HD SQ NK
4	454668	2	Pin, Spring; 3/16 x 1-1/4 Cap
5	417923	1	Pin, Clevis; .250 x 1.500
6	120392	2	Washer, Flat; .281 x .625 x .065
7	180124	3	Bolt, Hex; 3/8-16 x 1-1/4
8	11009	1	Pedal, Brake; R.H.
9	121223	1	Pin, Cotter; 1/16 x .75
10	435507	1	Nut, Lock; 1/2-13 Washer Insert
11	20773	1	Rod
12	120390	3	Washer, Flat; 9/16 x 1-3/8 x .109
13	411027	1	Fitting, Lube; 1/4-28
14	11074	1	Bushing; .505 x .74 x 1.438
15	415571	1	Pin, Clevis; .375 x 1.531
16	11718	1	Pin, Clevis; .375 x 1.250
17	180188	1	Bolt, Hex; 1/2-13 x 2-3/4
18	120238	1	Nut, Jam; 1/2-13
19	102623	1	Screw, Set; 1/2-13 x 2 Cup Pt.
20	24450	1	Lever, Forward-Reverse
21	24452	1	Grip, Hand Lever
22	20772	1	Arm, Parking Brake Lock
23	20775	2	Washer, Nylon; .375 x .75 x .060
24	124829	1	Nut, Jam; 3/8-16 Hex
25	179128	1	Pin, Cotter; 1/4 x 1
26	18381	1	Cam, Brake
27	21131	1	Link, Front
28	21132	1	Link, Rear
29	138083	1	Link, Rear
30	423302	1	Pin, Cotter; .078 x .627
31	180091	2	Bolt, Hex; 5/16-18 x 2-1/2
32	120393	2	Washer, Flat; .344 x .688 x .065
33	11779	2	Spring, Comp Type; 1 x .78 x 338 LB/IN
34	18396	1	Bracket, Weldment
35	18464	1	Plate, Clutch Detent
36	419455	6	Nut, Lock; 5/16-18 Washer Insert Hex
37	11263	1	Spring, Ext; 5-1/2 x .50 x 20 Rate
38	11329	1	Clip, Spring
39	121222	6	Pin, Cotter; .09 x .75
40	120394	6	Washer, Flat; .406 x .812 x .065
41	24491	1	Link, Forward-Reverse Shifter
42	138078	2	Pin, Clevis; .395 x .948
43	18390	1	Shaft, Clutch Weldment
44	124552	1	Key, Woodruff; 3/16 x 1 Hard No. 13
45	18485	1	Spacer, .760 x 1.00 x .540
46	10174	1	Bushing, Nylon; .760 x 1.000 x .600 Flange
47	18395	1	Arm, Reverse Clutch
48	11270	1	E-Ring; .750 Shaft
49	18400	1	Rod, Forward Clutch
50	124925	2	Nut, Jam; 3/8-24 Hex
51	18401	1	Rod, Reverse Clutch
52	18380	4	Clevis, 3/8-24 Adjustable
53	18365	1	Shaft, Cross Weldment
54	137185	3	Pin, Cotter; .125 x 1.000
55	18368	2	Arm, Shifter Weldment
56	18371	1	Lever, Shift
57	120396	1	Washer, Flat; .500 x 1.062 x .095
58	18372	1	Spring, Comp Type; 2-3/4 x .625 x 34 Rate
59	18373	1	Control, 2-Speed Asm.
60	20662	1	Control, PTO
61	11096	1	Bracket, Cross Shaft
62	180077	4	Bolt, Hex; 5/16-18 x 3/4
63	104036	1	Clevis, Adjustable; 1/4 x 28
64	138086	1	Pin, Clevis; .500 x 1.213
65	177923	2	Pin, Cotter; .125 x .750
66	18387	1	Yoke, 1/2-20 Adjustable
67	10670	3	Knob, Control
68	120386	1	Washer, Lock; 3/8 SP
69	18389	2	Rod, Shifting
70	18386	1	Rod, PTO
71	18388	1	Rod, 2-Speed
72	11860	3	Cotter, Hair Pin
73	120367	1	Nut, Hex; 1/4-28
74	413534	1	Nut, Lock; 3/8-16 N Hex
75	431780	1	Pin Clevis 3/8 x .750

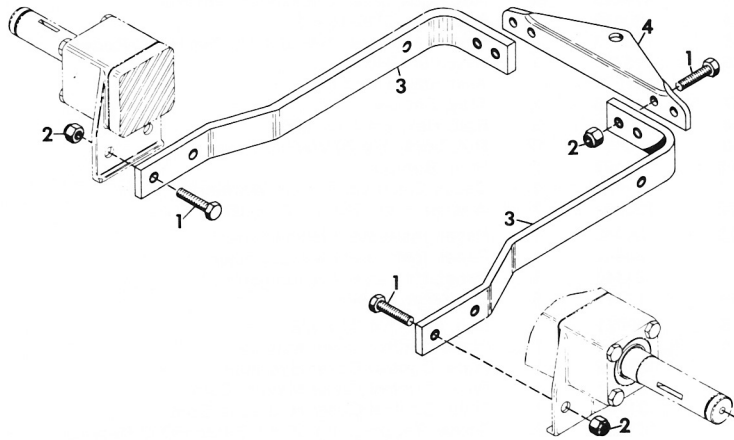
TRACTOR FRAME



<u>Item No.</u>	<u>Part No.</u>	<u>Qty.</u>	<u>Description</u>
1	11057	1	Insert, Grille Mesh
2	10969	1	Casting, Grille
3	419455	6	Nut, Lock; 5/16-18 Washer Insert Hex
4	180079	6	Bolt, Hex; 5/16-18 x 1
5	160515	8	Screw, Machine; 1/4-20 x 1/2 Pan HD C-Recess
6	15707	1	Assembly, Hood
	31271		Assembly, Hood Com.
7	18573	1	Tray, Battery
8	180018	5	Bolt, Hex; 1/4-20 x .625
9	419454	12	Nut, Lock; 1/4-20 Washer Insert
10	18197	2	Plug, Bumper
11	11989	1	Decal, Electrical System Warning
12	120392	7	Washer, Flat; .281 x .625 x .065
13	24448	1	Panel, Instrument Homeowner
	24447	1	Panel, Instrument w/Hourmeter
	24446	1	Panel, Instrument w/Ammeter
14	11777	6	Grommet, Plastic
15	180021	7	Bolt, Hex; 1/4-20 x 7/8
16	31164	1	Plate, Control Cover Manual
	31165	1	Plate, Control Cover Hydraulic
	31275	1	Plate, Control Cover Manual Com.
	31276	1	Plate, Control Cover Hydraulic Com.
17	167257	6	Screw, Tapping; 1/4-20 x 1/2 Pan HD C-Recess
18	180124	2	Bolt, Hex; 3/8-16 x 1-1/8
19	24378	2	Strap, Frame Ext.
20	456004	2	Nut, Lock; 3/8-16 Washer Insert Hex
21	24356	2	Spring, Seat
22	24358	2	Bracket, Rear Hitch
23	180175	2	Bolt, Hex; 1/2-13 x 1.25
24	18362	1	Bracket, Fender Hold-Up
25	126216	4	Bolt; 5/16-18 x 3/4 RD HD SQ NK
26	24357	2	Bumper, Seat
27	18420	1	Pin, Clevis; .250 x .500
28	180122	2	Bolt, Hex; 3/8-16 x 1
29	120394	2	Washer, Flat; .406 x .812 x .065
30	24815	2	Bushing, Rear Fender
31	21424	1	Seat, Intermediate Back
	21423	1	Seat, High Back
32	24348	1	Weldment, Seat Pan
	24347	1	Weldment, Seat Pan Onan
33	17837	2	Reflector, Red Safety
34	24608	3	Decal, Gravely Logo
	24588	1	Decal, Gravely Logo
35	121223	1	Pin, Cotter; 1/16 x .75
36	120214	4	Washer, Lock; 5/16 SP
37	18416	1	Strap, Fender Hold-Up
38	22421	1	Bracket, Forward Tank
39	22422	1	Bracket, Rear Tank
40	14897	2	Moulding
41	11058	4	Nut (Rim)
42	24610	1	Stripe, L.H. Side Consumer
	31844	1	Stripe, L.H. & R.H. Side Commercial
NS	24609	1	Stripe, R.H. Side Consumer
43	181700	4	Bolt, Hex; 1/2-20 x 1-1/2
44	24353	1	Weldment, Frame
	31265	1	Weldment, Frame Commercial
45	10405	2	Cotter, Hair Pin
46	180024	2	Bolt, Hex; 1/4-20 x 1-1/4
47	120386	2	Washer, Flat; 5/16 x 47/64 x .065
48	180077	4	Bolt, Hex; 5/16-18 x 3/4
49	180177	2	Bolt, Hex; 1/2-13 x 1-1/2
50	435507	2	Nut, Lock; 1/2-13 Washer Insert
51	446470	4	Washer, Flat; .375 x 1.125 x .065
52	413447	4	Nut, Lock; 5/16-18 Type N Hex
53	24594	2	Decal, Model 8102
	24595	2	Decal, Model 8122
	24596	2	Decal, Model 8123
	24600	2	Decal, Model 8183-T
	31428	2	Decal, Model 8162-B
	31429	2	Decal, Model 8163-B
	24598	2	Decal, Model 8162-T
	24599	2	Decal, Model 8163-T
	31441	2	Decal, Model 8128
	31305	2	Decal, Model 8129
	31442	2	Decal, Model 8169
	31443	2	Decal, Model 8179
	31444	2	Decal, Model 8199
54	12391	1	Assembly, Door
55	24588	1	Decal, Gravely Logo
56	21423	1	Seat, High Back
57	24347	1	Weldment, Seat Pan (Onan)
58	24644	1	Bracket, Fuel Pump
59	180120	2	Bolt, Hex; 3/8-16 x .750
60	24649	1	Pump, Electric Fuel

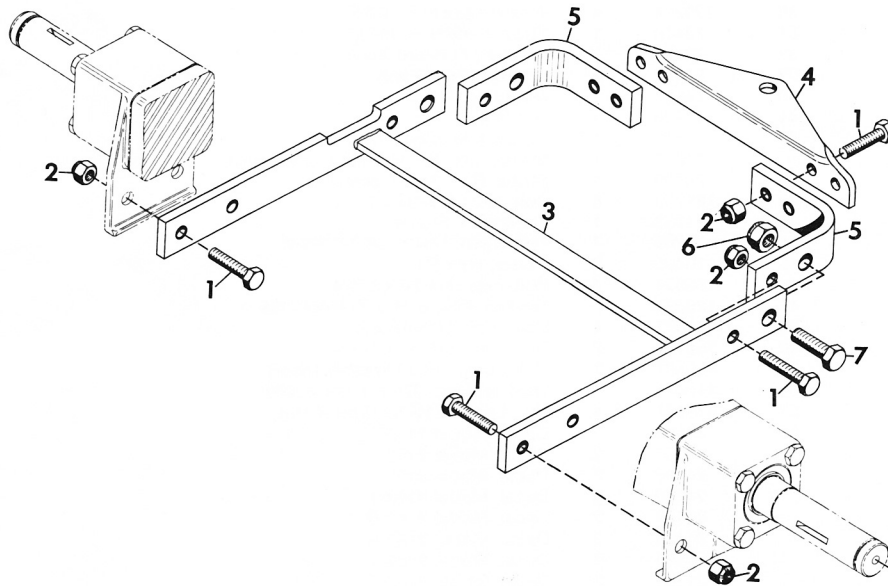
Circle "A" Pertains to Tractor Model 8179 Only.

**REAR HITCH FOR MODELS
8102, 8122, 8123, 8128, 8129, 8162-B, 8163-B AND 8169**



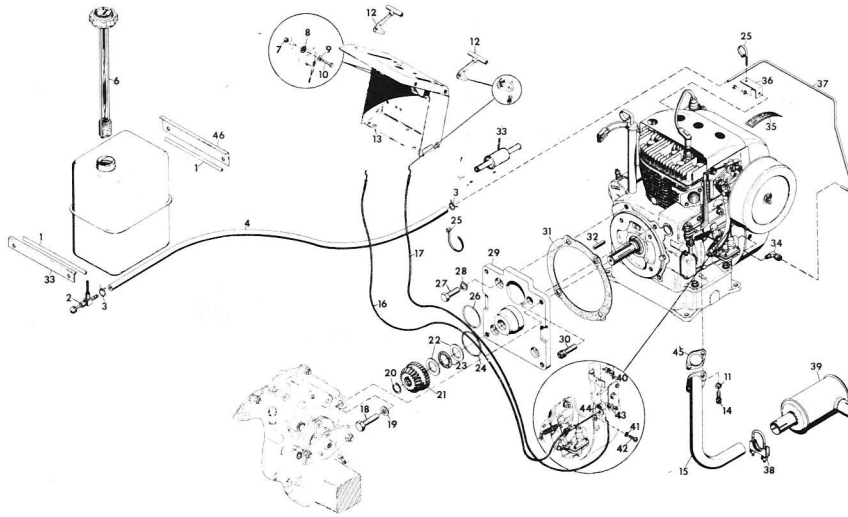
Item No.	Part No.	Qty.	Description
1	180179	8	Bolt, Hex; 1/2-13 x 1-3/4
2	435507	8	Nut, Lock; 1/2-13 Washer Insert
3	20450	2	Arm, Rear Hitch
4	19517	1	Plate, Hitch

**REAR HITCH FOR MODELS
8162-T, 8183-T, 8163-T, 8179 AND 8199**



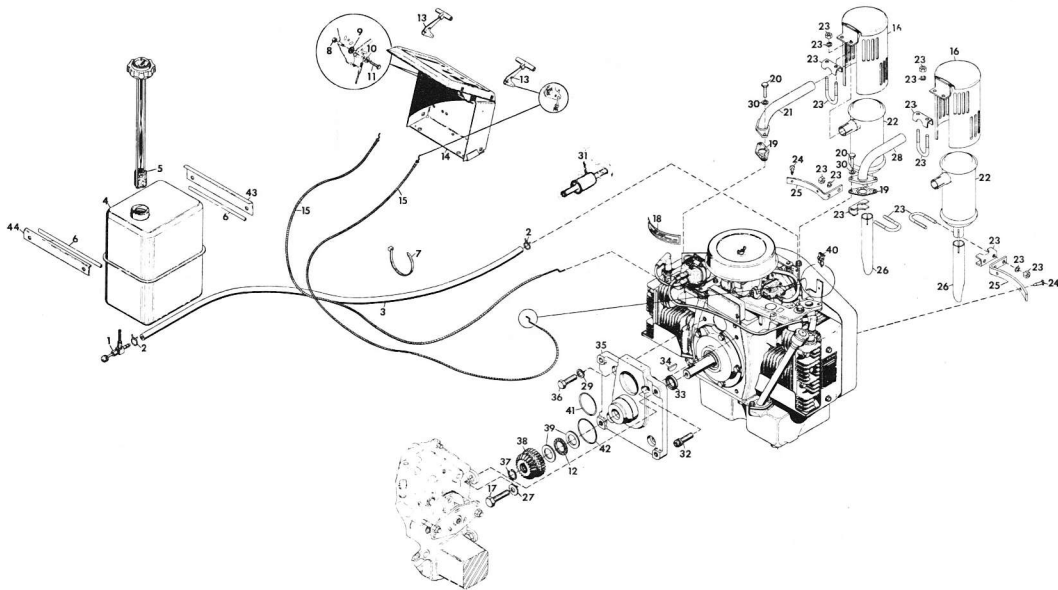
Item No.	Part No.	Qty.	Description
1	180179	10	Bolt, Hex; 1/2-13 x 1-3/4
2	435507	10	Nut, Lock; 1/2-13 Washer Insert
3	21421	1	Weldment, Drawbar 817
4	19517	1	Plate, Hitch
5	21418	2	Bracket, Hitch Plate
6	418692	2	Nut, Lock; 5/8-11 Washer Insert Hex
7	271723	2	Bolt, Hex; 5/8-11 x 2

ENGINE, FUEL SYSTEM AND EXHAUST SYSTEM FOR MODELS 8102, 8122, 8123, 8128 AND 8129



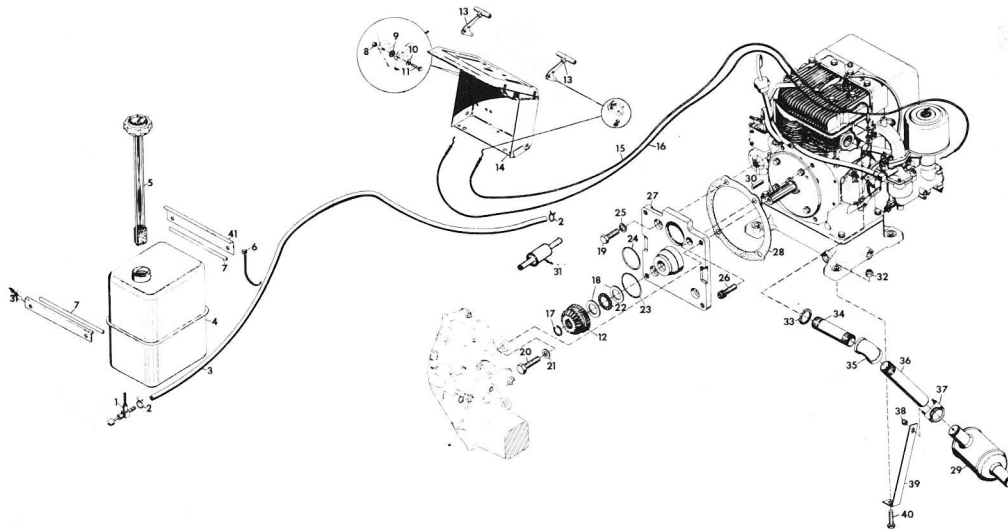
Item No.	Part No.	Qty.	Description
1	14897	2	Moulding
2	18563	1	Valve, Fuel; 90 Deg Reverse Flow
3	7216	2	Clamp, Fuel Hose
4	21482	1	Hose, Fuel
5	12383	1	Tank, Fuel
6	21415	1	Gauge, Gas
7	416430	1	Nut, Lock; 1/4-28 Type N Zinc
8	11772	1	Washer, Friction
9	11774	1	Washer, Spring
10	181566	1	Bolt, Hex; 1/4-28 x 3/4
11	120214	2	Washer, Lock; 5/16 SP
12	11773	2	Assembly, Knob and Lever
13	24446	1	Panel, Instrument w/Ammeter
	24448	1	Panel, Instrument
14	421705	2	Screw, Cap; 5/16-18 x 3/4 Socket HD
15	19492	1	Header, Exhaust
16	18509	1	Assembly, Throttle Conduit 812
17	11771	1	Assembly, Choke Conduit 812
18	180175	4	Bolt, Hex; 1/2-13 x 1.25
19	120396	4	Washer, Flat; .500 x 1.062 x .095
20	18344	1	Ring, Retaining; 1.125 Shaft
21	18343	1	Gear, Spur and Bevel; Input
22	18342	2	Race, Bearing Thrust; 1.127 x 1.740
23	18341	1	Bearing, Thrust; 1.127 x 1.740 x .078
24	18346	1	O-Ring; 3.000 x 3.188 x .094
25	10629	9	Tie, Cable
26	18347	1	O-Ring; 2.500 x 2.750 x .125
27	180146	3	Bolt, Hex; 7/16-14 x 1-1/8
28	131100	3	Washer, Lock; 7/16 SP Heavy
29	20555	1	Adpater, Engine
30	421648	1	Screw, Cap; 7/16-14 x 1 Socket Head
31	18340	1	Gasket, Adaptor
32	18345	1	Key, Square; .250 x 1.250
33	31848	1	Fuel Filter
34	114798	1	Elbow, 1/4 Ball Sleeve Asm.
35	10862	1	Decal, Air Cleaner Instruction
36	12019	1	Bracket, Fuel Line Support
37	12009	1	Connector, to Pump Fuel Line
38	14728	1	Clamp, Muffler
39	18543	1	Muffler, Exhaust
40	7331	1	Clip, Speed
41	120380	1	Washer, Lock; 1/4 SP
42	160515	1	Screw, Mach; 1/4-20 x 1/2 Pan HD
43	120375	1	Nut, Hex; 1/4-20
44	18522	1	Bracket
45	11202	1	Gasket, Exhaust
46	22422	1	Bracket, Rear Tank
47	22421	1	Bracket, Forward Tank

ENGINE, FUEL SYSTEM AND EXHAUST SYSTEM FOR MODELS 8162-T, 8163-T AND 8183-T



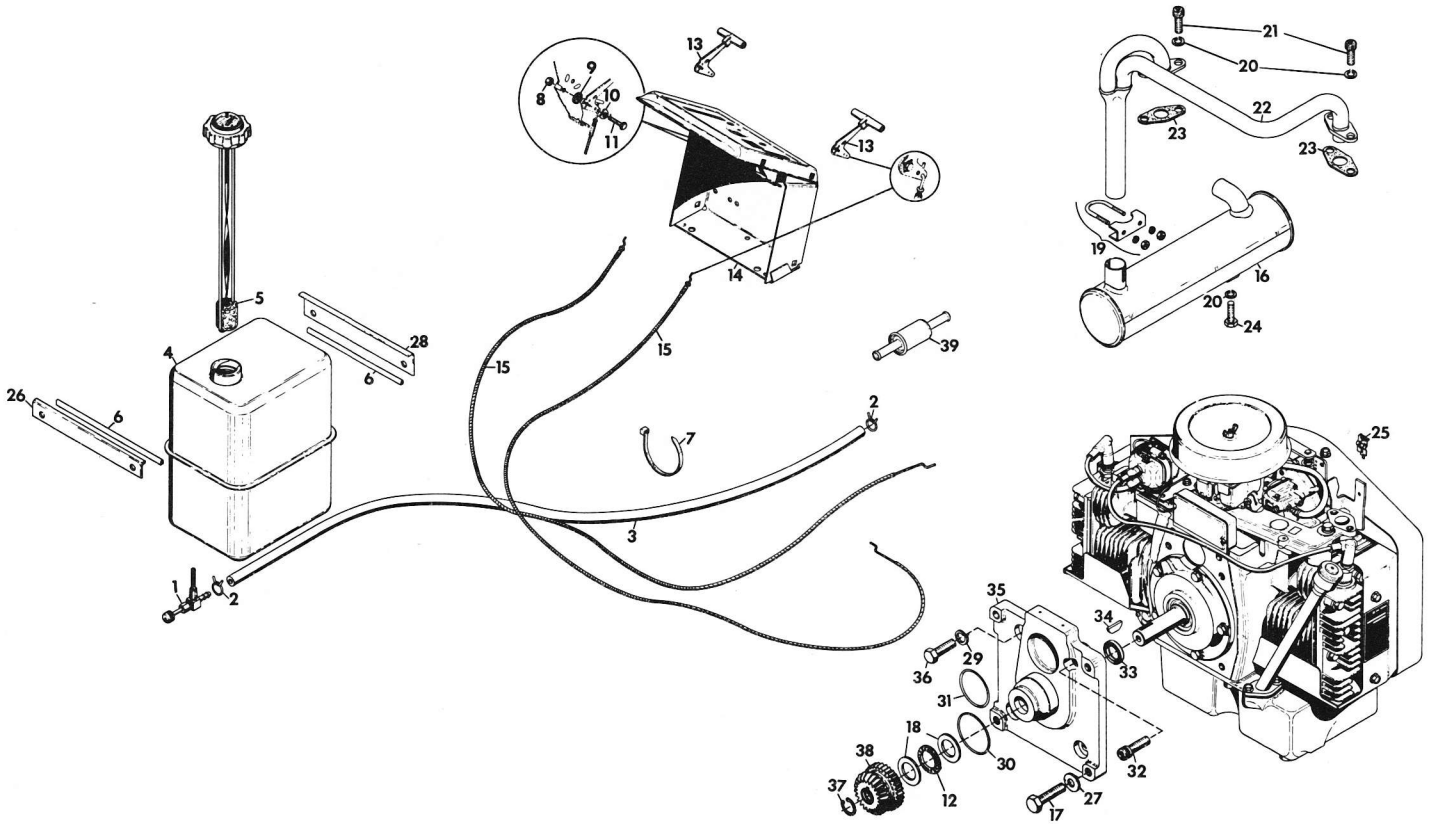
<u>Item No.</u>	<u>Part No.</u>	<u>Qty.</u>	<u>Description</u>
1	18563	1	Valve, Fuel; 90 Deg. Reverse Flow
2	7216	2	Clamp, Fuel Hose
3	20560	1	Hose, Fuel; 67 Inches
4	12383	1	Tank, Fuel
5	21415	1	Gauge, Gas
6	14897	2	Moulding
7	10629	8	Tie, Cable
8	416430	1	Nut, Lock; 1/4-28 Type N Zinc
9	11772	1	Washer, Friction
10	11774	1	Washer, Spring
11	181566	1	Bolt, Hex; 1/4-28 x 3/4
12	18341	1	Bearing, Thrust; 1.127 x 1.740 x .078
13	11773	2	Assembly, Knob and Lever
14	24447	1	Panel, Instrument w/Hourmeter
15	20565	2	Assembly, Choke Conduit
16	23300	2	Shield, Muffler
17	180177	4	Bolt, Hex; 1/2-13 x 1-1/2
18	10862	1	Decal, Air Cleaner Instruction
19	23290	2	Gasket, Exhaust; Onan
20	421705	4	Screw, Cap; 5/16-18 x 3/4 Socket HD
21	23279	1	Weldment, Exhaust Header R.H.
22	23299	2	Muffler
23	14728	4	Clamp, Muffler
24	144811	4	Screw, Tapping; 10-12 x 1/2 Pan HD C-Recess
25	23280	2	Bracket, Muffler
26	23301	2	Extension, Muffler
27	120396	4	Washer, Flat; .500 x 1.062 x .095
28	23277	1	Weldment, Exhaust Header L.H.
29	120382	3	Washer, Lock; 3/8 SP
30	120214	4	Washer, Lock; 5/16 SP
31	31848	1	Fuel Filter
32	454475	1	Screw, Cap; 3/8-16 x 1-3/4 Hex Socket HD
33	18517	1	Seal, Oil; 1.125 x 1.628 x .250
34	103909	1	Key, Woodruff; .250 x 1.125 Soft
35	18427	1	Adaptor, Engine (Onan NB CCK Engine)
36	180128	3	Bolt, Hex; 3/8-16 x 1-3/4
37	18344	1	Ring, Retaining; 1.125 Shaft
38	18343	1	Gear, Spur and Bevel, Input
39	18342	2	Race, Bearing Thrust; 1.127 x 1.740 x .060
40	7331	1	Clip, Speed
41	18347	1	O-Ring; 2.500 x 2.75 x .125
42	18346	1	O-Ring; 3.000 x 3.188 x .094
43	22422	1	Bracket, Rear Tank
44	22421	1	Bracket, Forward Tank

ENGINE, FUEL SYSTEM AND EXHAUST SYSTEM FOR MODELS 8162-B, 8163-B AND 8169



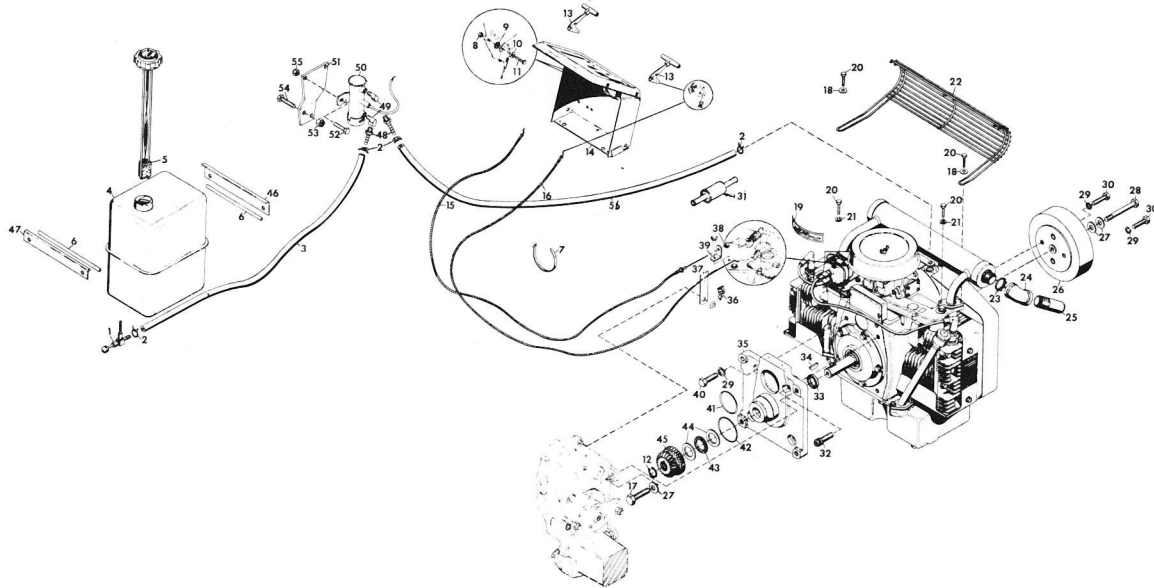
Item No.	Part No.	Qty.	Description
1	18563	1	Valve, Fuel; 90 Deg Reverse Flow
2	7216	2	Clamp, Fuel Hose
3	20560	1	Hose, Fuel; 67 Inches
4	12383	1	Tank, Fuel
5	21415	1	Gauge, Gas
6	10629	12	Tie, Cable
7	14897	2	Moulding
8	416430	1	Nut, Lock; 1/4-28 Type N Zinc
9	11772	1	Washer, Friction
10	11774	1	Washer, Spring
11	181566	1	Bolt, Hex; 1/4-28 x 3/4
12	18343	1	Gear, Spur and Bevel, Input
13	11773	2	Assembly, Knob and Lever
14	24447	1	Panel, Instrument w/Hourmeter
	24448	1	Panel, Instrument
15	20565	1	Assembly, Choke Conduit 816S
16	20942	1	Assembly, Throttle Conduit 816S
17	18344	1	Ring, Retaining; 1.125 Shaft
18	18342	1	Race, Bearing Thrust; 1.127 x 1.740 x .060
19	180146	3	Bolt, Hex; 7/16-14 x 1-1/8
20	180175	4	Bolt, Hex; 1/2-13 x 1.25
21	120396	4	Washer, Flat; .500 x 1.062 x .095
22	18341	1	Bearing, Thrust; 1.127 x 1.740 x .078
23	18346	1	O-Ring; 3.000 x 3.188 x .094
24	18347	1	O-Ring; 2.500 x 2.750 x .125
25	131100	3	Washer, Lock; 7/16 SP Heavy
26	421648	1	Screw, Cap; 7/16-14 x 1 Socket Head
27	20555	1	Adaptor, Engine
28	18340	1	Gasket, Adaptor
29	18543	1	Muffler, Exh
30	18345	1	Key, Square; .250 x 1.250
31	31848	1	Fuel Filter
32	456004	1	Nut, Lock; 3/8-16 Washer Insert Hex
33	10866	1	Nut, Conduit 1" Pipe
34	20579	1	Nipple, Pipe 1 x 6
35	127793	1	Pipe, 1 In. Elbow
36	20580	1	Nipple, Pipe; 1" x 8.4" Special
37	14728	1	Clamp, Muffler
38	120368	1	Nut, Hex; 5/16-24
39	20581	1	Support, Exhaust
40	180124	1	Bolt, Hex; 3/8-16 x 1-1/4
41	22422	1	Bracket, Rear Tank
42	22421	1	Bracket, Forward Tank

ENGINE, FUEL SYSTEM AND EXHAUST SYSTEM FOR MODEL 8199



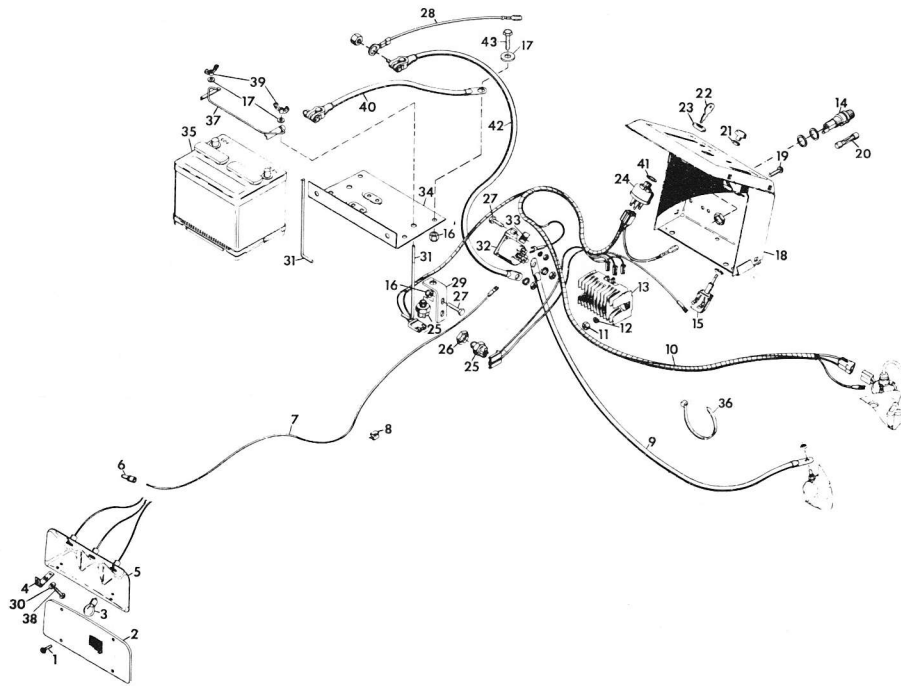
Item No.	Part No.	Qty.	Description
1	18563	1	Valve, Fuel; 90 Deg Reverse Flow
2	7216	4	Clamp, Fuel Hose
3	31447	1	Fuel Hose
4	12383	1	Tank, Fuel
5	21415	1	Gauge, Gas
6	14897	2	Moulding
7	10629	8	Tie, Cable
8	416430	1	Nut, Lock; 1/4-28 Type N Zinc
9	11772	1	Washer, Friction
10	11774	1	Washer, Spring
11	181566	1	Bolt, Hex; 1/4-28 x 3/4
12	18341	1	Bearing, Thrust; 1.127 x 1.740 x .078
13	11773	2	Assembly, Knob and Lever
14	24446	1	Panel, Instrument w/Ammeter
15	20565	2	Assembly, Choke Conduit
16	31719	1	Muffler, Exhaust
17	18344	1	Ring, Retaining; 1.125 Shaft
18	18342	2	Gear, Spur and Bevel Input
19	31720	1	Clamp, Muffler
20	120214	5	Washer, Lock 5/16 Reg
21	421705	4	Screw, Cap; 5/16-18 x 3/4 Socket HD
22	31718	1	Header, Exhaust
23	23290	2	Gasket, Exhaust Onan
24	180079	1	Bolt, Hex; 5/16-18 x 1-1/8
25	7331	1	Clip Speed
26	22421	1	Bracket, Forward Tank
27	120396	4	Washer, Flat; .531 x 1.062 x .095
28	22422	1	Bracket, Rear Tank
29	120382	2	Washer, Lock; 3/8 SP
30	18346	1	O-Ring; 3.000 x 3.188 x .094
31	18347	1	O-Ring; 2.500 x 2.750 x .125
32	454475	1	Screw, Cap; 3/8-16 x 1-3/4 Hex Socket HD
33	18517	1	Seal, Oil; 1.125 x 1.628 x .250
34	103909	1	Key, Woodruff; .250 x 1.125 Soft
35	18427	1	Adaptor, Engine (Onan NB CCK Engine)
36	180128	3	Bolt, Hex 3/8-16 x 1.75
37	18344	1	Ring, Retaining; 1.125 Shaft
38	18343	1	Gear, Spur and Bevel, Input
39	31848	1	Fuel Filter

ENGINE, FUEL SYSTEM AND EXHAUST SYSTEM FOR MODELS 8179



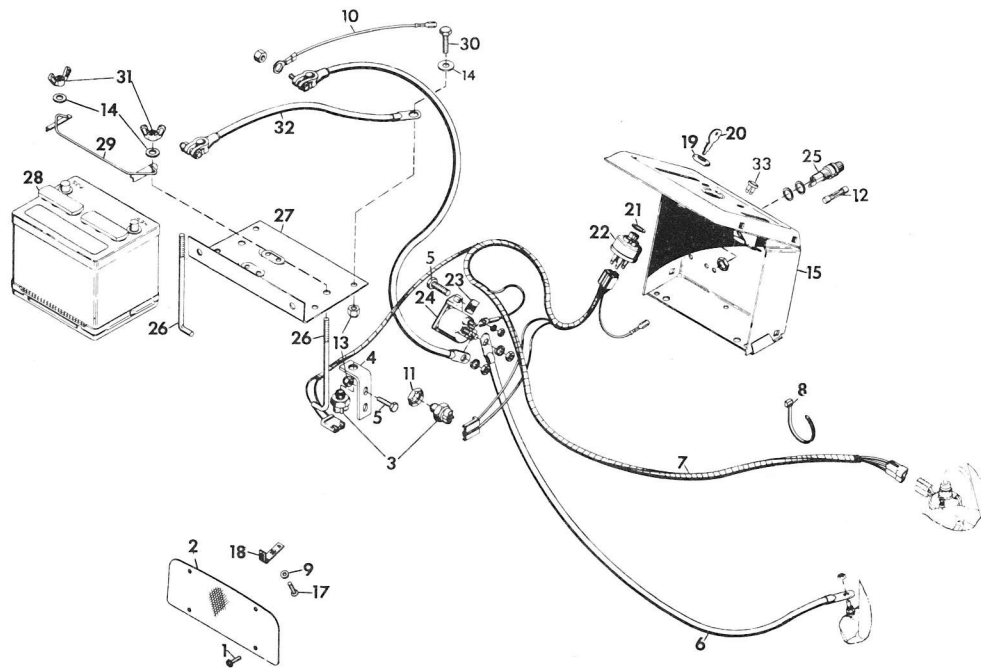
Item No.	Part No.	Qty.	Description
1	18563	1	Valve, Fuel; 900EG Reverse Flow
2	7216	2	Clamp, Fuel Hose
3	23313	1	Hose, Fuel; 66 In.
4	12383	1	Tank, Fuel
5	21415	1	Gauge, Gas
6	14897	2	Moulding
7	10629	8	Tie, Cable
8	416430	1	Nut, Lock; 1/4-28 Type N Zinc
9	11772	1	Washer, Friction
10	11774	1	Washer, Spring
11	181566	1	Bolt, Hex; 1/4-28 x 3/4
12	18344	1	Ring, Retaining; 1.125 Shaft
13	11773	2	Assembly, Knob and Lever
14	24446	1	Assembly, Instrument Panel 8177
15	15752	1	Control
16	19689	1	Assembly, Conduit
17	180177	4	Bolt, Hex; 1/2-13 x 1-1/2
18	446354	2	Washer, Flat; 5/16 x 7/8 x .065
19	10862	1	Decal, Air Cleaner Instruction
20	180079	4	Bolt, Hex; 5/16-18 x 1
21	120214	4	Washer, Lock; 5/16 SP
22	21413	1	Shield, Muffler
23	10866	1	Nut, Conduit 1" Pipe
24	144138	1	Elbow, Pipe 1 In. 45 Deg.
25	19347	1	Pipe, Exhaust
26	19599	1	Flywheel, Aux. Model 816
27	120396	1	Washer, Flat; .500 x 1.062 x .095
28	19598	1	Bolt, Special; 7/16-14 x 5
29	120382	2	Washer, Lock; 3/8 SP
30	180124	2	Bolt, Hex; 3/8-16 x 1-1/4
31	31848	1	Fuel Filter
32	454475	1	Screw, Cap; 3/8-16 x 1-3/4 Hex Socket HD
33	18517	1	Seal, Oil; 1.125 x 1.628 x .250
34	103909	1	Key, Woodruff; .250 x 1.125 Soft
35	18427	1	Adaptor, Engine (Onan NB CCK Engine)
36	7331	1	Clip, Speed
37	19690	1	Bracket, Control Cable
38	120375	1	Nut, Lock; 1/4-20
39	18522	1	Bracket
40	180128	3	Bolt, Hex; 3/8-16 x 1-3/4
41	18347	1	O-Ring; 2.500 x 2.750 x .125
42	18346	1	O-Ring; 3.000 x 3.188 x .094
43	18341	1	Bearing, Thrust; 1.127 x 1.740 x .078
44	18342	2	Race, Bearing Thrust; 1.127 x 1.740 x .060
45	18343	1	Gear, Spur and Bevel, Input
46	22422	1	Bracket, Rear Tank
47	22421	1	Bracket, Forward Tank
48	13502	2	Connector
49	24648	2	Fitting, Fuel Pump 900 Elbow
50	24649	1	Pump, Electric Fuel
51	24644	1	Bracket, Fuel Pump
52	180020	2	Bolt, Hex; 1/4-20 x 3/4
53	456004	2	Nut, Lock; 3/8-16 Washer Insert Hex
54	180120	2	Bolt, Hex; 3/8-16 x .750
55	419454	2	Nut, Lock; 1/4-20 Washer Insert
56	24645	1	Hose, Fuel Pump Inlet

ELECTRIC SYSTEM FOR MODELS 8122 AND 8123



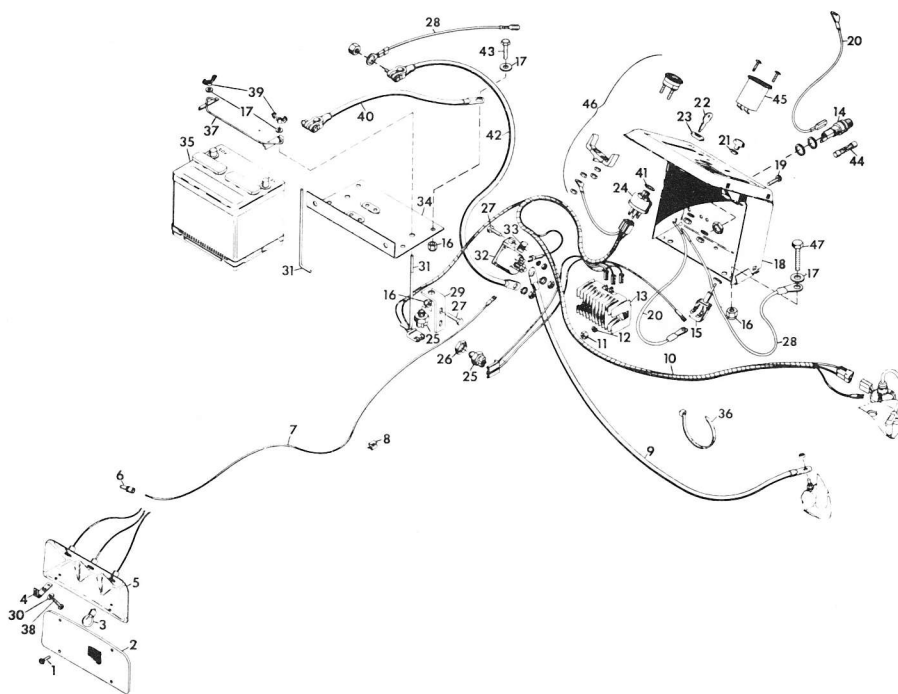
Item No.	Part No.	Qty.	Description
1	159920	4	Screw, Mach; 10-24 x 1/2 Pan HD C-Recess
2	11289	1	Panel, Front Light
3	454646	3	Lamp; No. 1073
4	11030	4	Clip, Light Mtg.
5	11334	1	Assembly, Lamp Reflector
6	11763	1	Nut, Wire
7	19534	1	Wire, Headlight
8	11286	2	Clip, Wire
9	11031	1	Cable, Starter
10	22122	1	Harness, Wiring; 810 & 812
11	120375	2	Nut, Hex; 1/4-20
12	120380	2	Washer, Lock; 1/4 SP
13	18009	1	Regulator, Rectifier
14	21416	1	Fuse, Panel
15	11337	1	Switch, Light
16	419454	2	Nut, Lock; 1/4-20 Washer Insert
17	120392	3	Washer, Flat; .281 x .625 x .065
18	24448	1	Panel Instrument Consumer
19	160541	2	Screw, Machine; 1/4-20 Pan HD
20	14893	1	Fuse, 30 Amp Acc-30
21	18587	1	Nut, Special; Light Switch
22	18570	1	Key, Ignition Switch
23	19666	1	Nut, Jam; 9/16-24 Indak 83024
24	19223	1	Switch, Ignition Indak J463-A
25	20916	2	Switch, Interlock
26	107354	1	Nut, Stamped; 9/16-18
27	180018	2	Bolt, Hex; 1/4-20 x .625
28	21425	1	Wire, Instrument Panel
29	20660	1	Bracket, Switch
30	120385	4	Washer, Flat; .188 x .562 x .049
31	12386	2	Hook, Battery
32	7277	1	Switch, Mag; Delco 1466, Prestolite EO17811
33	11676	1	Nut, Speed; 1/4-20
34	18573	1	Tray, Battery
35	7274	1	Battery, 12V
36	10629	9	Tie, Cable
37	11027	1	Bracket, Battery Hold Down
38	159947	4	Screw, Mach; 10-24 x 3/4 Pan HD C-Recess
39	10413	2	Nut, Wing; 1/4-20 Washer Insert
40	6980	1	Cable, Negative Battery
41	19667	1	Washer, Lock; 9/16 Int Tooth, Indak 85013
42	12375	1	Cable, Battery to Magnetic Switch
43	180021	1	Bolt, Hex; 1/4-20 x 7/8

ELECTRIC SYSTEM FOR MODEL 8102



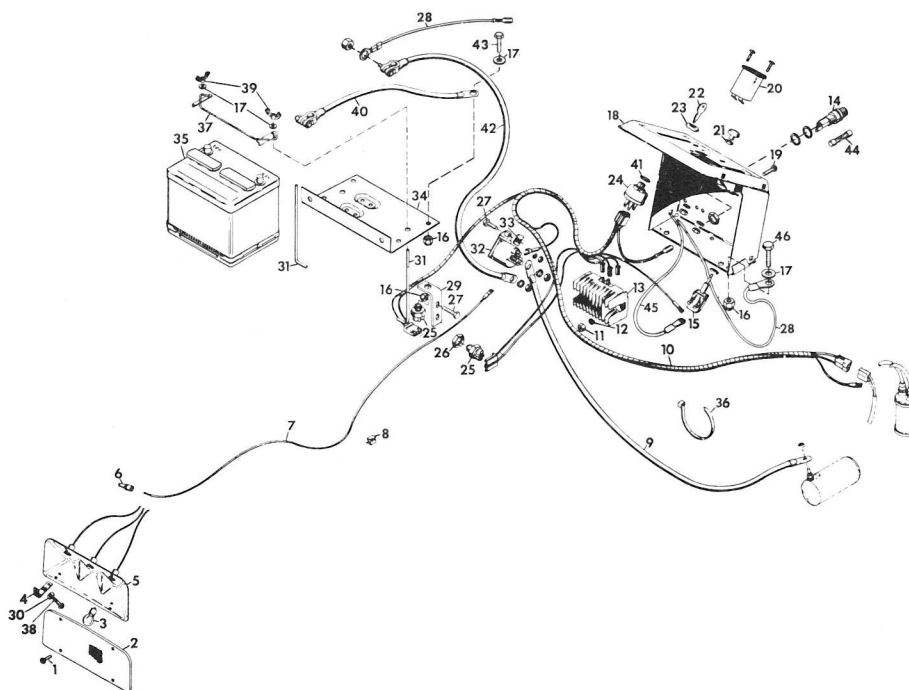
Item No.	Part No.	Qty.	Description
1	159920	4	Screw, Mach; 10-24 x 1/2 Pan HD C-Recess
2	11288	1	Panel, Front
3	20916	2	Switch, Interlock
4	20660	1	Bracket, Switch
5	180018	3	Bolt, Hex; 1/4-20 x .625
6	11031	1	Cable, Starter
7	24754	1	Harness, Wiring 3 Amp
8	10629	9	Tie, Cable
9	120385	4	Washer, Flat; .188 x .562 x .049
10	21425	1	Wire Instrument Panel
11	107354	1	Nut, Stamped; 9/16-18
12	24858	1	Fuse, 5 Amp 3 AG5
13	419454	3	Nut, Lock; 1/4-20 Washer Insert
14	120392	2	Washer, Flat; .281 x .625 x .065
15	24448	1	Panel, Instrument Homeowner
16	12375	1	Cable, Battery to Magnetic Switch
17	159947	4	Screw, Mach; 10-24 x 3/4 Pan HD C-Recess
18	11030	4	Clip, Light Mtg.
19	19666	1	Nut, Jam; 9/16-24 Indak 83024
20	18570	1	Key, Ignition Switch
21	19667	1	Washer, Lock; 9/16 Int. Tooth, Indak 85013
22	19223	1	Switch, Ignition Indak J463-A
23	11676	1	Nut, Speed; 1/4-20
24	7277	1	Switch, Mag; Delco 1466, Prestolite EO17811
25	21416	1	Fuse, Panel
26	12386	2	Hook, Battery
27	18573	1	Tray, Battery
28	7274	1	Battery, 12V
29	11027	1	Bracket, Battery Hold Down
30	180021	1	Bolt, Hex; 1/4-20 x 7/8
31	10413	2	Nut, Wing; 1/4-20 Washer Inert
32	6980	1	Cable, Negative Battery
33	24449	1	Plug, Button (Light Switch)

ELECTRIC SYSTEM FOR MODELS 8128 AND 8129



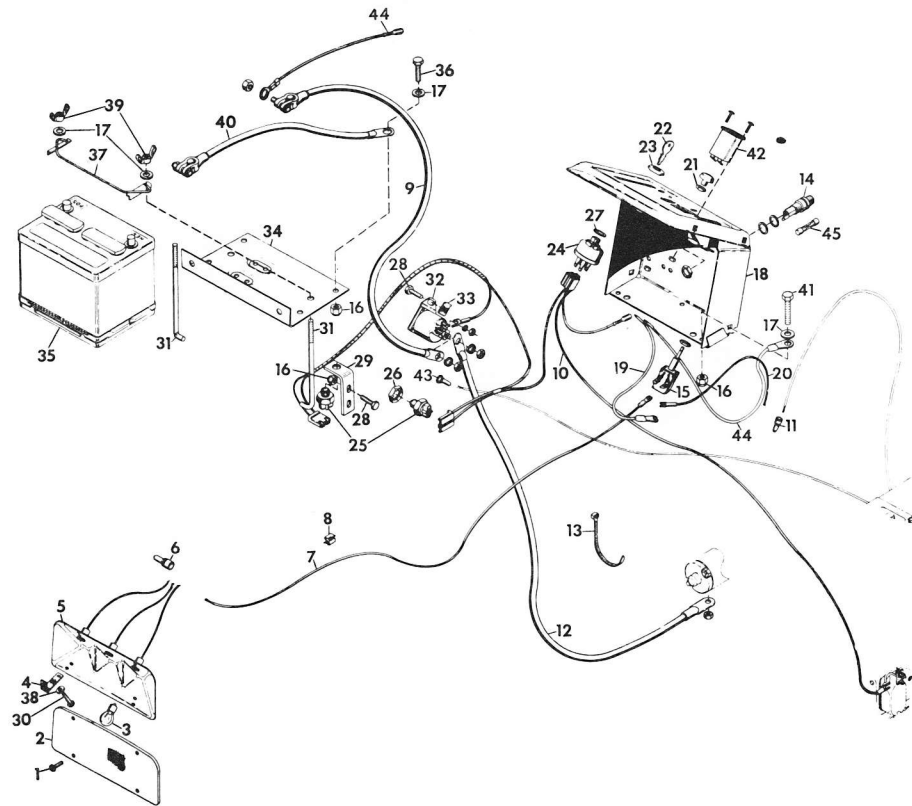
Item No.	Part No.	Qty.	Description
1	159920	4	Screw, Mach; 10-24 x 1/2 Pan HD C-Recess
2	11289	1	Panel, Front Light
3	454646	3	Lamp; No. 1073
4	11030	4	Clip, Light Mtg.
5	11334	1	Assembly, Lamp Reflector
6	11763	1	Nut, Wire
7	19534	1	Wire, Headlight
8	11286	2	Clip, Wire
9	11031	1	Cable, Starter
10	22122	1	Harness, Wiring; 810 & 812
11	120375	2	Nut, Hex; 1/4-20
12	120380	2	Washer, Lock; 1/4 SP
13	18009	1	Regulator, Rectifier
14	21416	1	Fuse, Panel
15	11337	1	Switch, Light
16	419454	3	Nut, Lock; 1/4-20 Washer Insert
17	120392	4	Washer, Flat; .281 x .625 x .065
18	24446	1	Panel, Instrument w/Ammeter
19	160541	2	Screw, Machine; 1/4-20 Pan HD
20	21426	2	Wire, Hourmeter
21	18587	1	Nut, Special; Light Switch
22	18570	1	Key, Ignition Switch
23	19666	1	Nut, Jam; 9/16-24 Indak 83024
24	19223	1	Switch, Ignition Indak 1463-A
25	20916	2	Switch, Interlock
26	107354	1	Nut, Stamped; 9/16-18
27	180018	3	Bolt, Hex; 1/4-20 x .625
28	21425	2	Wire, Instrument Panel
29	20660	1	Bracket, Switch
30	120385	4	Washer, Flat; .188 x .562 x .049
31	12386	2	Hook, Battery
32	7277	1	Switch, Mach; Delco 1466, Prestolite EO17811
33	11676	1	Nut, Speed; 1/4-20
34	18573	1	Tray, Battery
35	7274	1	Battery, 12V
36	10629	9	Tie, Cable
37	11027	1	Bracket, Battery Hold Down
38	159947	4	Screw, Mach; 10-24 x 3/4 Pan HD C-Recess
39	10413	2	Nut, Wing; 1/4-20 Washer Insert
40	6980	1	Cable, Negative Battery
41	19667	1	Washer, Lock; 9/16 Int Tooth, Indak 85013
42	12375	1	Cable, Battery to Magnetic Switch
43	180021	1	Bolt, Hex; 1/4-20 x 7/8
44	14893	1	Fuse, 30 Amp Acc-30
45	21414	1	Hourmeter
46	21848	1	Gauge; Ammeter
47	180020	1	Bolt, Hex; 1/4-20 x 3/4

ELECTRIC SYSTEM FOR MODELS 8162-T, 8163-T AND 8183-T



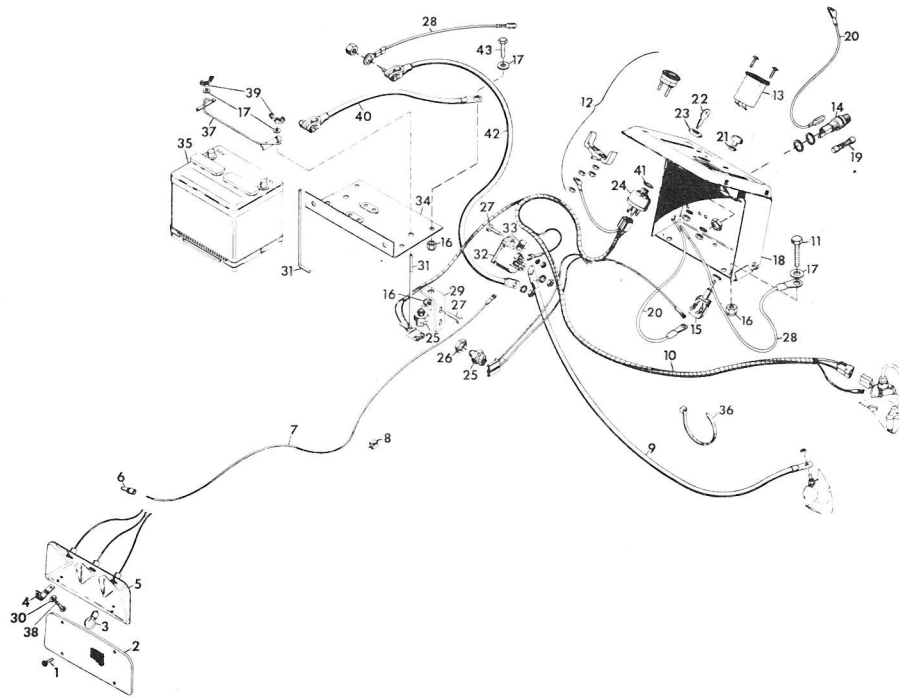
Item No.	Part No.	Qty.	Description
1	159920	4	Screw, Mach; 10-24 x 1/2 Pan HD C-Recess
2	11289	1	Panel, Front Light
3	454646	3	Lamp; No. 1073
4	11030	4	Clip, Light Mtg.
5	11334	1	Assembly, Lamp Reflector
6	11763	1	Nut, Wire
7	19534	1	Wire, Headlight
8	11286	2	Clip, Wire
9	23310	1	Cable, Battery
10	23304	1	Harness, Wiring
11	120375	2	Nut, Hex; 1/4-20
12	120380	2	Washer, Lock; 1/4 SP
13	18009	1	Regulator, Rectifier
14	21416	1	Fuse, Panel
15	11337	1	Switch, Light
16	419454	3	Nut, Lock; 1/4-20 Washer Insert
17	120392	2	Washer, Flat; .281 x .625 x .065
18	24447	1	Panel, Instrument w/Hourmeter
19	160541	2	Screw, Machine; 1/4-20 Pan HD
20	21414	1	Hourmeter
21	18587	1	Nut, Special; Light Switch
22	18570	1	Key, Ignition Switch
23	19666	1	Nut, Jam; 9/16-24 Indak 83024
24	19223	1	Switch, Ignition Indak J463-A
25	20916	2	Switch, Interlock
26	107354	1	Nut, Stamped; 9/16-18
27	180018	3	Bolt, Hex; 1/4-20 x .625
28	21425	1	Wire, Instrument Panel
29	20660	1	Bracket, Switch
30	120385	4	Washer, Flat; .188 x .562 x .049
31	12386	2	Hook, Battery
32	7277	1	Switch, Mach; Delco 1466, Prestolite EO17811
33	11676	1	Nut, Speed; 1/4-20
34	18573	1	Tray, Battery
35	7274	1	Battery, 12V
36	10629	8	Tie, Cable
37	11027	1	Bracket, Battery Hold Down
38	159947	4	Screw, Mach; 10-24 x 3/4 Pan HD C-Recess
39	10413	2	Nut, Wing; 1/4-20 Washer Insert
40	6980	1	Cable, Negative Battery
41	19667	1	Washer, Lock; 9/16 Int Tooth, Indak 85013
42	12375	1	Cable, Battery to Magnetic Switch
43	180021	1	Bolt, Hex; 1/4-20 x 7/8
44	14893	1	Fuse, 30 Amp Acc-30
45	21426	2	Wire, Hourmeter
46	180020	1	Bolt, Hex; 1/4-20 x 3/4

ELECTRIC SYSTEM FOR MODEL 8169



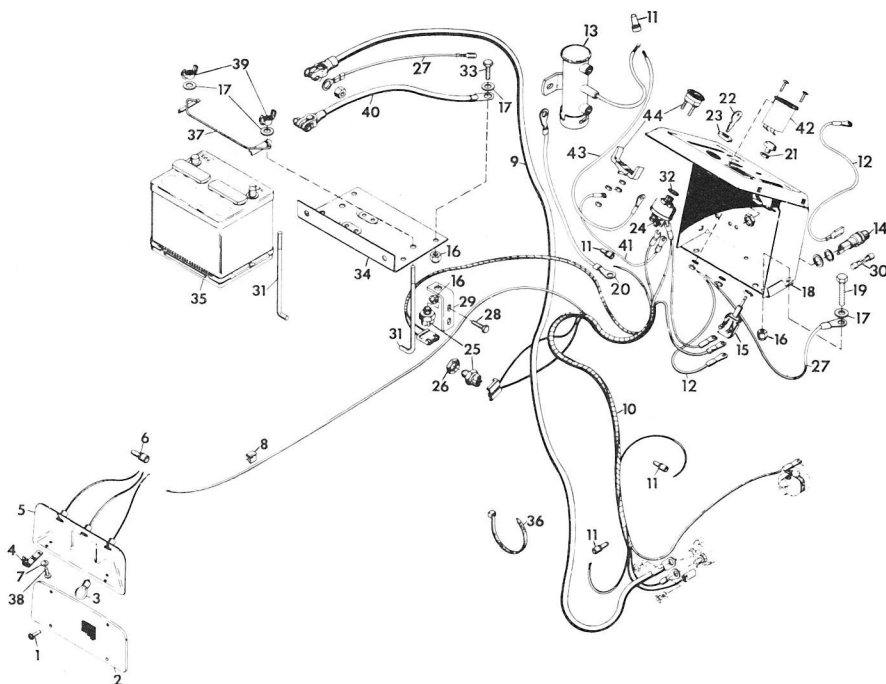
Item No.	Part No.	Qty.	Description
1	159920	4	Screw, Mach; 10-24 x 1/2 Pan HD C-Recess
2	11289	1	Panel, Front Light
3	454646	3	Lamp; No. 1073
4	11030	4	Clip, Light Mtg.
5	11334	1	Assembly, Lamp Reflector
6	11763	1	Nut, Wire
7	19534	1	Wire, Headlight
8	11286	2	Clip, Wire
9	12375	1	Cable, Battery to Magnetic Switch
10	22121	1	Harness, Wiring
11	11763	1	Nut, Wire
12	20577	1	Cable, Starter
13	10629	12	Tie, Cable
14	21416	1	Fuse, Panel
15	11337	1	Switch, Light
16	419454	3	Nut, Lock; 1/4-20 Washer Insert
17	120392	4	Washer, Flat; .281 x .625 x .065
18	24447	1	Panel, Instrument w/Hourmeter
19	23550	1	Wire, Hourmeter
20	20777	1	Wire, Headlights
21	18587	1	Nut, Special; Light Switch
22	18570	1	Key, Ignition Switch
23	19666	1	Nut, Jam; 9/16-24 Indak 83024
24	20564	1	Switch, Ignition Indak D463-A
25	20916	2	Switch, Interlock
26	107354	1	Nut, Stamped; 9/16-18
27	19667	1	Washer, Lock; 9/16 Int Tooth, Indak 85013
28	180018	3	Bolt, Hex; 1/4-20 x .625
29	20660	1	Bracket, Switch
30	159947	4	Screw, Mach; 10-24 x 3/4 Pan HD C-Recess
31	12386	2	Hook, Battery
32	7277	1	Switch, Mag.
33	11676	1	Nut, Speed; 1/4-20
34	18573	1	Tray, Battery
35	7274	1	Battery, 12V
36	180021	1	Bolt, Hex; 1/4-20 x 7/8
37	11027	1	Bracket, Battery Hold Down
38	120385	4	Washer, Flat; .188 x .562 x .049
39	10413	2	Nut, Wing; 1/4-20 Washer Insert
40	6980	1	Cable, Negative Battery
41	180020	1	Bolt, Hex; 1/4-20 x 3/4
42	21414	1	Hourmeter
43	24756	1	Eyelet
44	21425	2	Wire, Instrument Panel
45	14893	1	Fuse, 30 Amp Acc-30

ELECTRIC SYSTEM FOR MODEL 8199



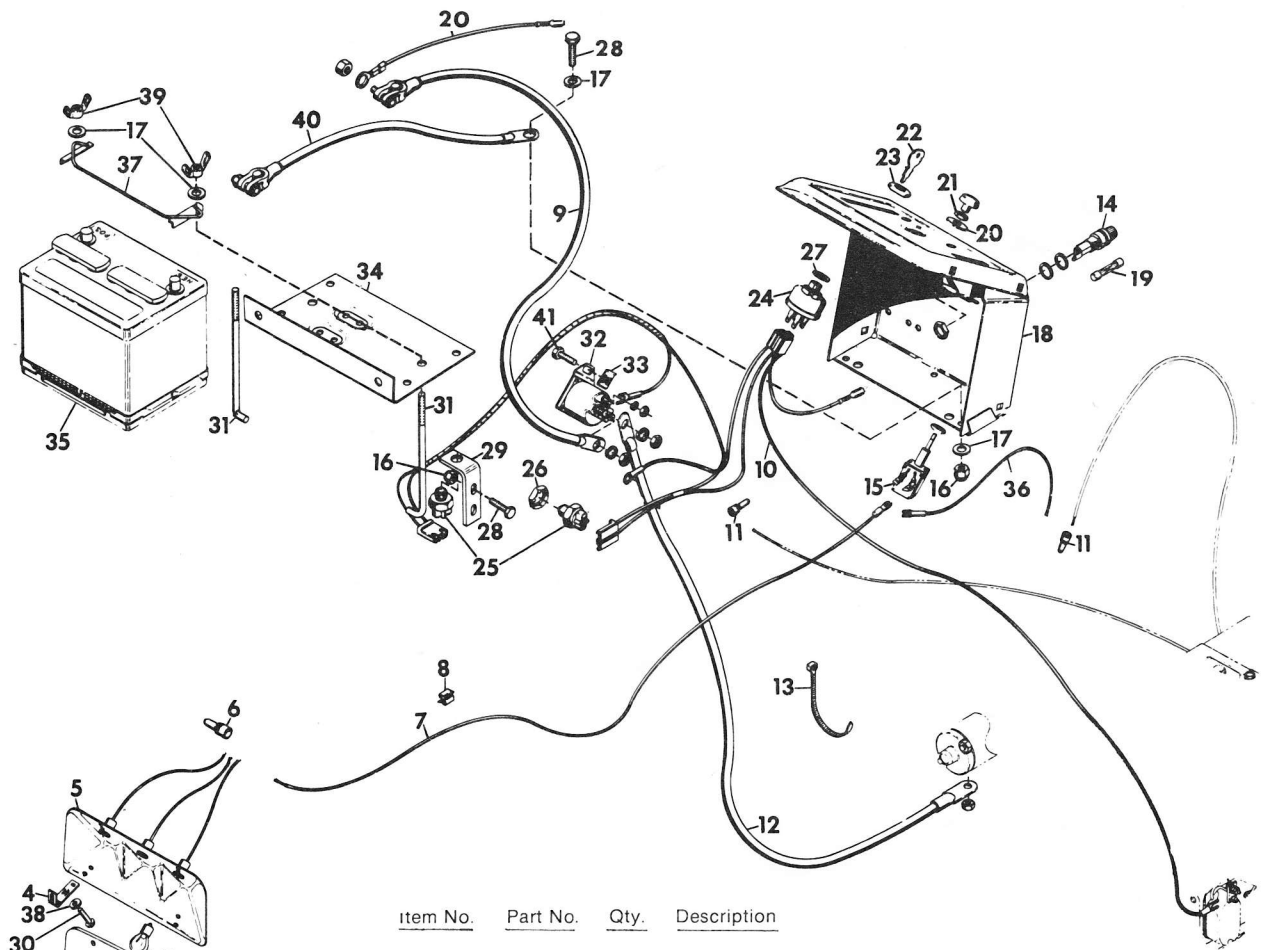
Item No.	Part No.	Qty.	Description
1	159920	4	Screw, Mach; 10-24 x 1/2 Pan HD C-Recess
2	11289	1	Panel, Front Light
3	454646	3	Lamp; No. 1073
4	11030	4	Clip, Light Mtg.
5	11334	1	Assembly, Lamp Reflector
6	11763	1	Nut, Wire
7	19534	1	Wire, Headlight
8	11286	2	Clip, Wire
9	31450	1	Cable, Starter
10	31717	1	Harness, Wiring
11	180020	1	Bolt, Hex; 1/4-20 3/4
12	21848	1	Gauge Ammeter
13	21414	1	Hourmeter
14	21416	1	Fuse, Panel
15	11337	1	Switch, Light
16	419454	3	Nut, Lock; 1/4-20 Washer Insert
17	120392	4	Washer, Flat; .281 x .625 x .065
18	24446	1	Panel, Instrument w/Ammeter
19	14893	1	Fuse, 30 Amp Acc-30
20	21426	2	Wire, Hourmeter
21	18587	1	Nut, Special; Light Switch
22	18570	1	Key, Ignition Switch
23	19666	1	Nut, Jam; 9/16-24 Indak 83024
24	19223	1	Switch, Ignition Indak 1463-A
25	20916	2	Switch, Interlock
26	107354	1	Nut, Stamped; 9/16-18
27	180018	3	Bolt, Hex; 1/4-20 x .625
28	21425	2	Wire, Instrument Panel
29	20660	1	Bracket, Switch
30	120385	4	Washer, Flat; .188 x .562 x .049
31	12386	2	Hook, Battery
32	7277	1	Switch, Mach; Delco 1466, Prestolite EO17811
33	11676	1	Nut, Speed; 1/4-20
34	18573	1	Tray, Battery
35	7274	1	Battery, 12V
36	10629	9	Tie, Cable
37	11027	1	Bracket, Battery Hold Down
38	159947	4	Screw, Mach; 10-24 x 3/4 Pan HD C-Recess
39	10413	2	Nut, Wing; 1/4-20 Washer Insert
40	6980	1	Cable, Negative Battery
41	19667	1	Washer, Lock; 9/16 Int Tooth, Indak 85013
42	12375	1	Cable, Battery to Magnetic Switch
43	180021	1	Bolt, Hex; 1/4-20 x 7/8

ELECTRIC SYSTEM FOR MODEL 8179



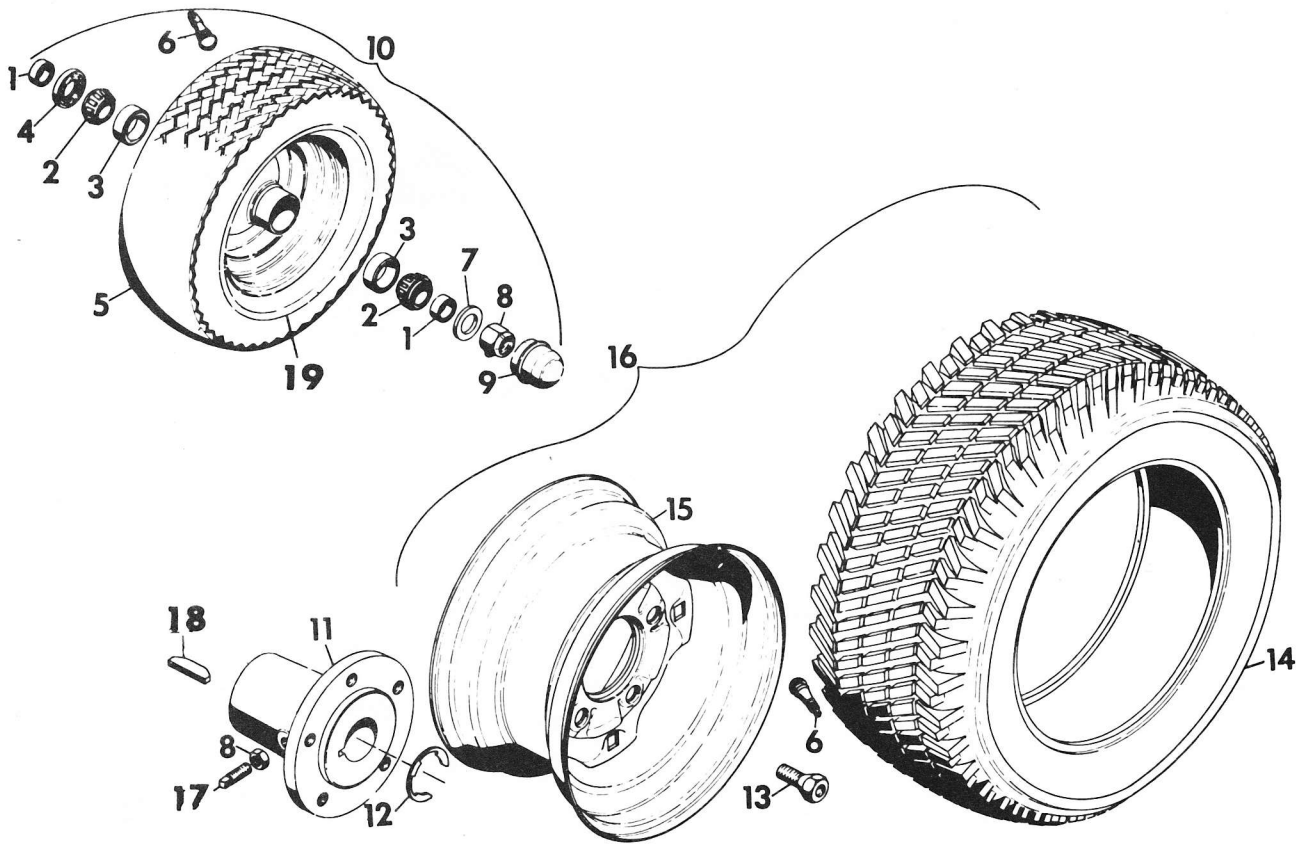
Item No.	Part No.	Qty.	Description
1	159920	4	Screw, Mach; 10-24 x 1/2 Pan HD C-Recess
2	11289	1	Panel, Front Light
3	454646	3	Lamp; No. 1073
4	11030	4	Clip, Light Mtg.
5	11334	1	Assembly, Lamp Reflector
6	11763	1	Nut, Wire
7	120385	4	Washer, Flat; .188 x .562 x .049
8	11286	4	Clip, Wire
9	20889	1	Cable, Battery
10	24755	1	Harness, Wiring T Tractors
11	11763	2	Nut, Wire
12	21426	2	Wire, Hourmeter
13	24649	1	Pump, Electric Fuel
14	21416	1	Fuse, Panel
15	11337	1	Switch, Light
16	419454	4	Nut, Lock; 1/4-20 Washer Insert
17	120392	4	Washer, Flat; .281 x .625 x .065
18	24446	1	Panel, Instrument w/Ammeter
19	180020	1	Bolt, Hex; 1/4-20 x 3/4
20	24647	1	Wire, Fuel Pump Ground
21	18587	1	Nut, Special; Light Switch
22	18570	1	Key, Ignition Switch
23	18585	1	Nut, Jam; 5/8-32
24	18207	1	Switch, Ignition
25	20916	2	Switch, Interlock
26	107354	1	Nut, Stamped; 9/16-18
27	21425	2	Wire, Instrument Panel
28	180018	2	Bolt, Hex; 1/4-20 x .625
29	20660	1	Bracket, Switch
30	14893	1	Fuse, 30 Amp Acc-30
31	12386	2	Hook, Battery
32	18586	1	Washer, Lock; 5/8 Int Tooth
33	180021	1	Bolt, Hex; 1/4-20 x 7/8
34	18573	1	Tray, Battery
35	7274	1	Battery, 12V
36	10629	8	Tie, Cable
37	11027	1	Bracket, Battery Hold Down
38	159947	4	Screw, Mach; 10-24 x 3/4 Pan HD C-Recess
39	10413	2	Nut, Wing; 1/4-20 Washer Insert
40	6980	1	Cable, Negative Battery
41	24769	1	Wire, Amp Meter
42	21414	1	Hourmeter
43	24655	1	Wire, Fuel Pump
44	21848	1	Gauge, Ammeter

ELECTRIC SYSTEM FOR MODELS 8162-B AND 8163-B



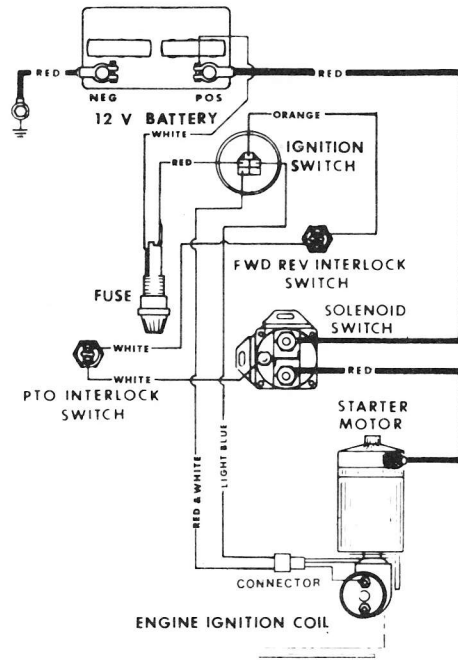
Item No.	Part No.	Qty.	Description
1	159920	4	Screw, Mach; 10-24 x 1/2 Pan HD C-Recess
2	11289	1	Panel, Front Light
3	454646	3	Lamp; No. 1073
4	11030	4	Clip, Light Mtg.
5	11334	1	Assembly, Lamp Reflector
6	11763	1	Nut, Wire
7	19534	1	Wire, Headlights
8	11286	4	Clip, Wire
9	12375	1	Cable, Battery to Magnetic Switch
10	22121	1	Harness, Wiring
11	11763	1	Nut, Wire
12	20577	1	Cable, Starter
13	10629	6	Tie, Cable
14	21416	1	Fuse, Panel
15	11337	1	Switch, Light
16	419454	3	Nut, Lock; 1/4-20 Washer Insert
17	120392	4	Washer, Flat; .281 x .625 x .065
18	24448	1	Panel, Instrument Consumer
19	14893	1	Fuse, 30 Amp Acc-30
20	21425	2	Wire, Instrument Panel
21	18587	1	Nut, Special
22	18570	1	Key, Ignition Switch
23	19666	1	Nut, Jam; 9/16-24
24	20564	1	Switch, Ignition
25	20916	2	Switch, Interlock
26	107354	1	Nut, Stamped; 9/16-18 x 7/8
27	19667	1	Washer, Lock Int Tooth
28	180021	3	Bolt, Hex; 1/4-20 x 7/8
29	20660	1	Bracket, Switch
30	159947	4	Screw, Mach. 10-24 Pan HD
31	12386	2	Hook, Battery
32	2777	1	Switch, Magnetic
33	11676	1	Nut, Speed; 1/4-20
34	18573	1	Tray, Battery
35	7274	1	Battery, 12V
36	20777	1	Wire, Headlight
37	11027	1	Bracket, Battery Hold Down
38	120385	4	Washer, Flat; 3/16 x 9/16 x .049
39	10413	2	Nut, Wing; 1/4-20 Washer Insert
40	6980	1	Cable, Negative Battery

FRONT AND REAR WHEEL

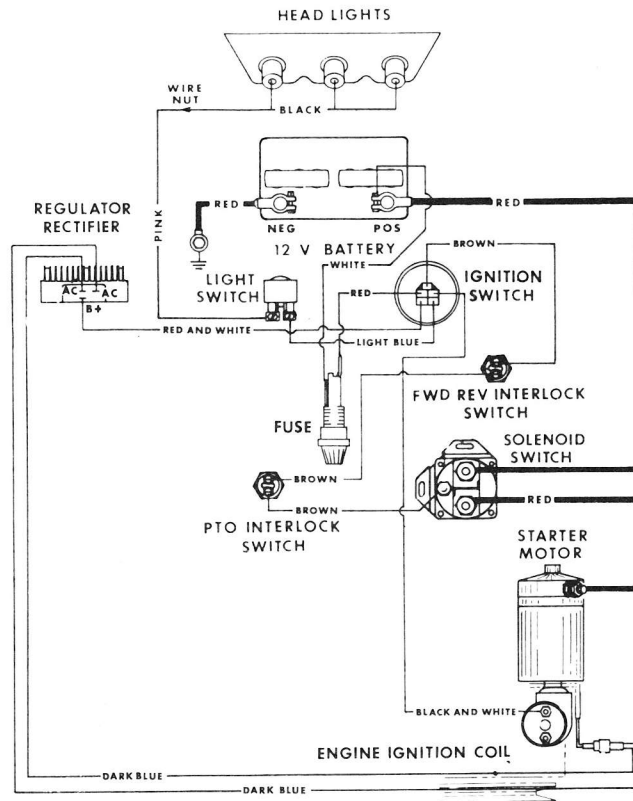


Item No.	Part No.	Qty.	Description
1	18448	2	Spacer
2	18446	2	Bearing, Cone
3	18445	2	Bearing, Cup LM 11910
4	18447	1	Seal
5	11190	1	Tire, Front; 16 x 6.50-8
	31280	1	Tire, Front; 16 x 7.50-8
6	11191	2	Assembly, Valve Stem
7	131016	1	Washer, Flat; .656 x 1.312 x .095
8	418692	1	Nut, Lock; 5/8-11 Washer Insert Hex
9	18449	1	Cap
10	18442	1	Assembly, Front Wheel 16 x 6.50-8
	31425	1	Assembly, Front Wheel 16 x 7.50-8
11	18052	1	Hub, Wheel
12	18055	1	E-Ring; 1.125 Shaft
13	12744	5	Bolts, Hub; 7/16-20 x 3/4 (Special)
14	11194	1	Tire, Rear; 23 x 8.50-12
	31278	1	Tire, Rear; 23 x 10.50-12
15	11195	1	Rim, Weldment
16	11705	1	Assembly, Rear Wheel 23 x 8.50-12
	31424	1	Assembly, Rear Wheel 23 x 10.50-12
17	102897	1	Screw Set 3/8-16 x 1-1/4 SQ HD Cup
18	187184	1	Key, Woodruff; .250 x 2.125 Soft Point
19	18443	1	Rim, Front Wheel Assm.

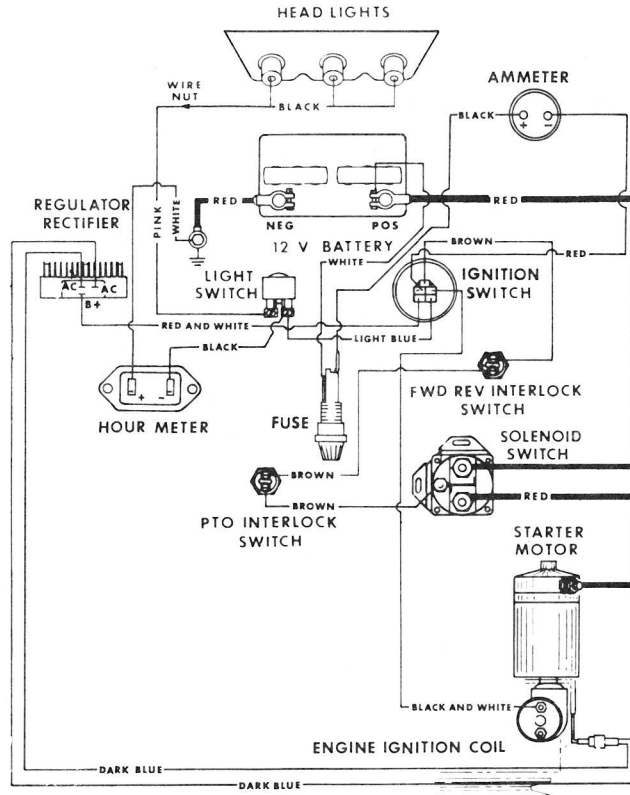
WIRING DIAGRAM FOR 8102



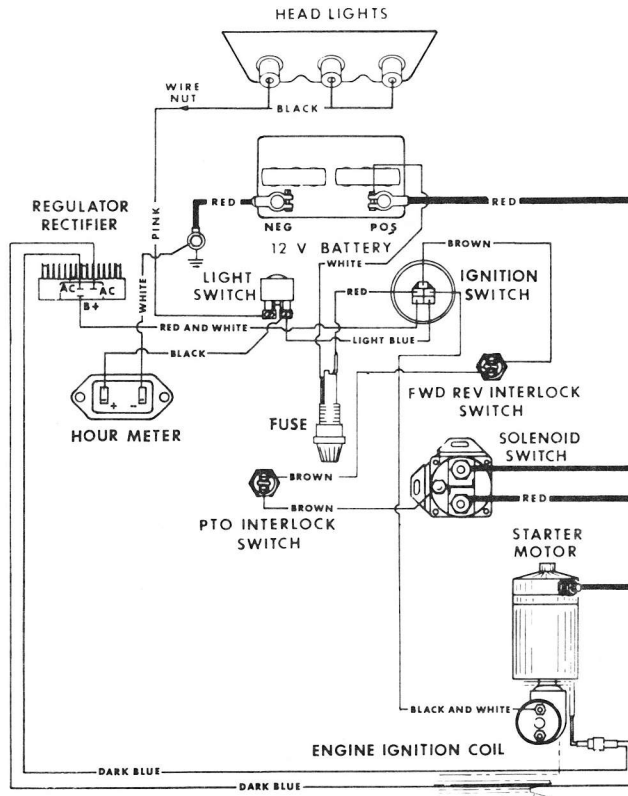
WIRING DIAGRAM FOR 8122 AND 8123



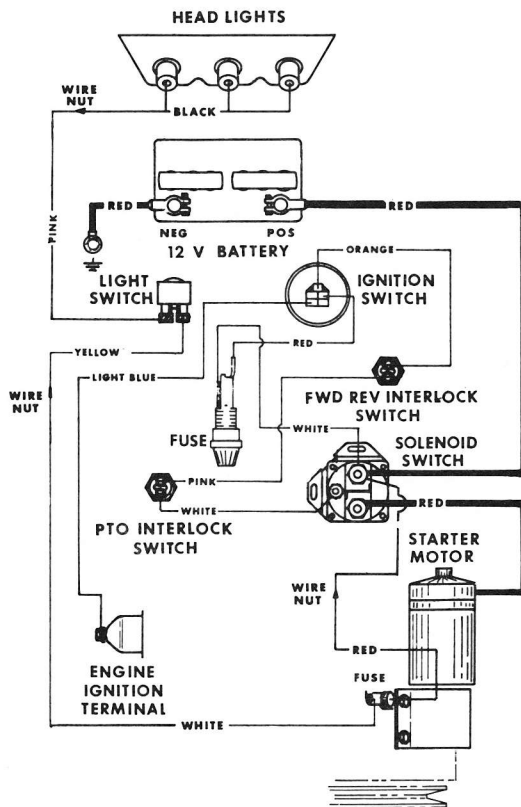
WIRING DIAGRAM FOR 8128 AND 8129



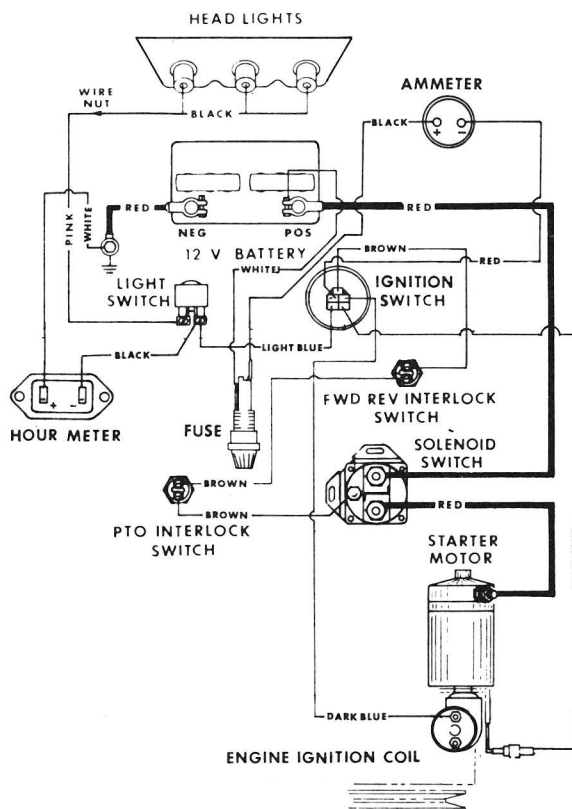
WIRING DIAGRAM FOR 8162-T, 8163-T AND 8183-T



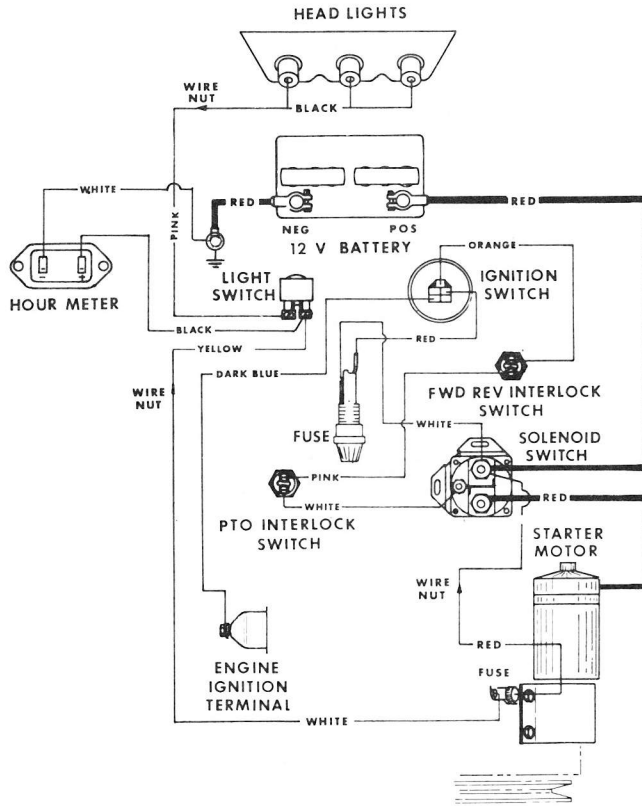
WIRING DIAGRAM FOR 8162-B AND 8163-B



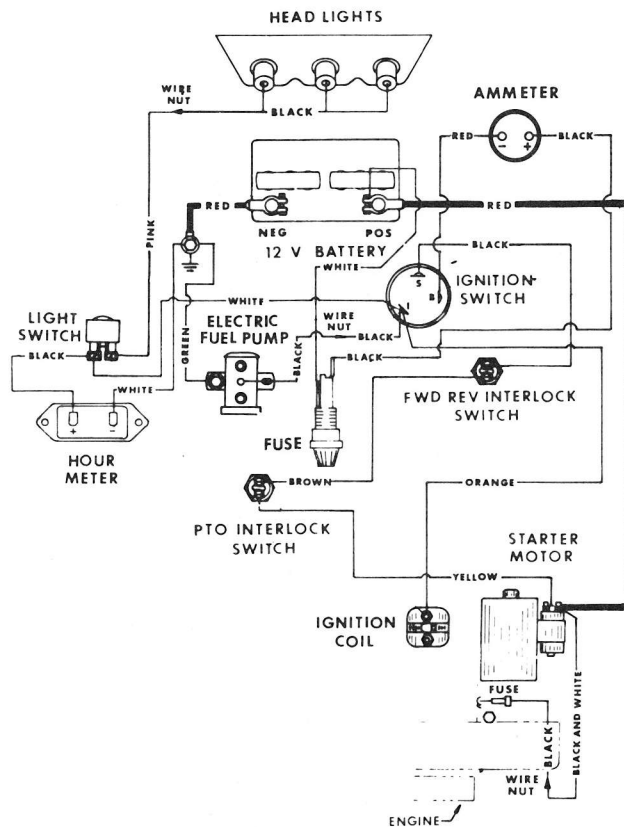
WIRING DIAGRAM FOR 8199



WIRING DIAGRAM FOR 8169



WIRING DIAGRAM FOR 8179



NOTES

NOTES

